



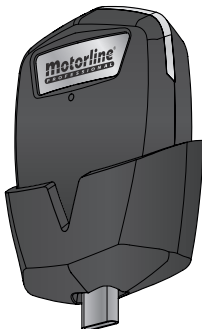
PORTUGAL



MCONNECT LINK

EN

USER/INSTALLER MANUAL



QR CODE

motorline[®]
PROFESSIONAL



V3.2
REV. 02/2025

INDEX

SAFETY INSTRUCTIONS	4
THE DEVICE	11
TECHNICAL CHARACTERISTICS	11
VISUAL APPEARANCE	13
INSTALLATION	14
INSTALLATION TYPES	14
ADD MODULE IN THE APP	15
REMOVE MODULE FROM THE APP	16
CHANGE OR VIEW CONTROL BOARDS PARAMETERS	17
CHANGE OR VIEW CONTROL BOARDS REMOTE CONTROLS	18
CHECK CONTROL BOARD DIAGNOSTICS	19
RESET	20
TROUBLESHOOTING	21

INDEX

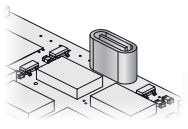
INSTRUCTIONS FOR FINAL CONSUMERS/TECHNICIANS	21
--	----

CONFORMITY DECLARATION	22
------------------------	----



Compatibility Notice




This product is compatible with control boards manufactured from 2024 onwards. Check if your control board has a Type-C input. If you don't see it, the control board is not compatible.



SAFETY INSTRUCTIONS

	<p>This product is certified in accordance with European Community (EC) safety standards.</p>
RoHS	<p>This product complies with Directive 2011/65/EU of the European Parliament and of the Council, of 8 June 2011, on the restriction of the use of certain hazardous substances in electrical and electronic equipment and with Delegated Directive (EU) 2015/863 from Commission.</p>
	<p>(Applicable in countries with recycling systems). This marking on the product or literature indicates that the product and electronic accessories (eg. Charger, USB cable, electronic material, controls, etc.) should not be disposed of as other household waste at the end of its useful life. To avoid possible harm to the environment or human health resulting from the uncontrolled disposal of waste, separate these items from other types of waste and recycle them responsibly to promote the sustainable reuse of material resources. Home users should contact the dealer where they purchased this product or the National Environment Agency for details on where and how they can take these items for environmentally safe recycling. Business users should contact their vendor and check the terms and conditions of the purchase agreement. This product and its electronic accessories should not be mixed with other commercial waste.</p>

SAFETY INSTRUCTIONS

	This marking indicates that batteries should not be discarded like other household waste at the end of their useful life. Batteries must be delivered to selective collection points for recycling.
	The different types of packaging (cardboard, plastic, etc.) must be subject to selective collection for recycling. Separate packaging and recycle it responsibly.
	This marking indicates that the product and electronic accessories (eg. charger, USB cable, electronic material, controls, etc.) are susceptible to electric shock by direct or indirect contact with electricity. Be cautious when handling the product and observe all safety procedures in this manual.

GENERAL WARNINGS

- This manual contains very important safety and usage information. Read all instructions carefully before beginning the installation/usage procedures and keep this manual in a safe place that it can be consulted whenever necessary.
- This product is intended for use only as described in this manual. Any other enforcement or operation that is not mentioned is expressly prohibited, as it may damage the product and put people at risk causing serious injuries.
- This manual is intended firstly for specialized technicians, and does not invalidate the user's responsibility to read the "User Norms" section in

SAFETY INSTRUCTIONS

- order to ensure the correct functioning of the product.
- The installation and repair of this product may be done by qualified and specialized technicians, to assure every procedure are carried out in accordance with applicable rules and norms. Nonprofessional and inexperienced users are expressly prohibited of taking any action, unless explicitly requested by specialized technicians to do so.
 - Installations must be frequently inspected for unbalance and the wear signals of the cables, springs, hinges, wheels, supports and other mechanical assembly parts.
 - Do not use the product if it is necessary repair or adjustment is required.
 - When performing maintenance, cleaning and replacement of parts, the product must be disconnected from power supply. Also including any operation that requires opening the product cover.
 - The use, cleaning and maintenance of this product may be carried out by any persons aged eight years old and over and persons whose physical, sensorial or mental capacities are lower, or by persons without any knowledge of the product, provided that these are supervision and instructions given by persons with experienced in terms of usage of the product in a safe manner and who understands the risks and dangers involved.
 - Children shouldn't play with the product or opening devices to avoid the motorized door or gate from being triggered involuntarily.
 - If the power cable is damaged, it must be replaced by the manufacturer, after-sales service or similarly qualified personnel to avoid danger.
 - The device must be disconnected from the electrical network when removing the battery.

SAFETY INSTRUCTIONS

- Ensure that blocking is avoided between the actuated part and its fixed parts due to the opening movement of the actuated part.

WARNINGS FOR TECHNICIANS

- Before beginning the installation procedures, make sure that you have all the devices and materials necessary to complete the installation of the product.
- You should note your Protection Index (IP) and operating temperature to ensure that is suitable for the installation site.
- Provide the manual of the product to the user and let them know how to handle it in an emergency.
- If the automatism is installed on a gate with a pedestrian door, a door locking mechanism must be installed while the gate is in motion.
- Do not install the product “upside down” or supported by elements do not support its weight. If necessary, add brackets at strategic points to ensure the safety of the automatism.
- Do not install the product in explosive site.
- Safety devices must protect the possible crushing, cutting, transport and danger areas of the motorized door or gate.
- Verify that the elements to be automated (gates, door, windows, blinds, etc.) are in perfect function, aligned and level. Also verify if the necessary mechanical stops are in the appropriate places.
- The control board must be installed on a safe place of any fluid (rain, moisture, etc.), dust and pests.
- You must route the various electrical cables through protective tubes,

SAFETY INSTRUCTIONS

to protect them against mechanical exertions, essentially on the power supply cable. Please note that all the cables must enter the control board from the bottom.

- If the automatism is to be installed at a height of more than 2,5m from the ground or other level of access, the minimum safety and health requirements for the use of work equipment workers at the work of Directive 2009/104/CE of European Parliament and of the Council of 16 September 2009.
- Attach the permanent label for the manual release as close as possible to the release mechanism.
- Disconnect means, such as a switch or circuit breaker on the electrical panel, must be provided on the product's fixed power supply leads in accordance with the installation rules.
- If the product to be installed requires power supply of 230Vac or 110Vac, ensure that connection is to an electrical panel with ground connection.
- The product is only powered by low voltage safety with control board (only at 24V motors).
- Parts/products weighing more than 20 kg must be handled with special care due to the risk of injury. It is recommended to use suitable auxiliary systems for moving or lifting heavy objects.
- Pay special attention to the danger of falling objects or uncontrolled movement of doors/gates during the installation or operation of this product.

SAFETY INSTRUCTIONS

WARNINGS FOR USERS

- Keep this manual in a safe place to be consulted whenever necessary.
- If the product has contact with fluids without being prepared, it must immediately disconnect from the power supply to avoid short circuits, and consult a specialized technician.
- Ensure that technician has provided you the product manual and informed you how to handle the product in an emergency.
- If the system requires any repair or modification, unlock the automatism, turn off the power and do not use it until all safety conditions have been met.
- In the event of tripping of circuits breakers or fuse failure, locate the malfunction and solve it before resetting the circuit breaker or replacing the fuse. If the malfunction is not repairable by consult this manual, contact a technician.
- Keep the operation area of the motorized gate free while the gate in in motion, and do not create strength to the gate movement.
- Do not perform any operation on mechanical elements or hinges if the product is in motion.

SAFETY INSTRUCTIONS

RESPONSABILITY

- Supplier disclaims any liability if:
 - Product failure or deformation result from improper installation use or maintenance!
 - Safety norms are not followed in the installation, use and maintenance of the product.
 - Instructions in this manual are not followed.
 - Damaged is caused by unauthorized modifications
 - In these cases, the warranty is voided.

MOTORLINE ELECTROCELOS SA.

Travessa do Sobreiro, nº29
4755-474 Rio Côvo (Santa Eugénia)
Barcelos, Portugal

SYMBOLS LEGEND:



• Important safety notices



• Useful information



• Programming information



• Potentiometer information



• Connectors information



• Buttons information

THE DEVICE

TECHNICAL CHARACTERISTICS

Explore the revolution in remote management with MCONNECT LINK, an innovative solution that takes control of your Motorline control board to a whole new level. With our intuitive MCONNECT application, you can manage and monitor your automations from anywhere in the world.

Main Features:

REMOTE CONTROL VIA INTERNET

Enjoy the freedom to open and close your automations with just a few clicks in the MCONNECT application. Whatever the distance, maintain full control over access, providing convenience and security at your fingertips.

REMOTE MANAGEMENT OF REMOTE CONTROLS

Have full control over your automation remote controls, allowing flexible and convenient management. With MCONNECT LINK, you can add or remove remote controls remotely, providing personalized and effective management. Ideal for condominiums and access systems, this functionality offers the flexibility to adapt to the specific needs of your customers. Stay in control, whether you're meters or kilometers away.

DETAILED CHANGE HISTORY

Stay informed about each activity of your automations. MCONNECT LINK records a complete history of openings, closings and any changes to parameters (certified technicians only), providing a detailed and transparent view of previous activity.

REMOTE DIAGNOSIS OF CONTROL BOARD STATUS

Eliminate uncertainty with instant remote diagnosis. Check the status of your automations in real time and identify possible problems from your mobile device.

THE DEVICE

TECHNICAL CHARACTERISTICS

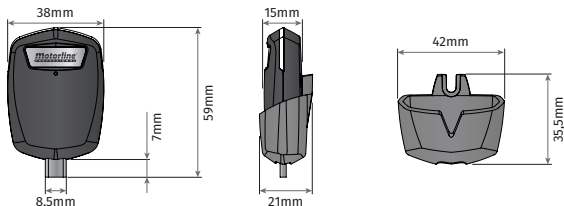
• Power Supply		USB Type C 5Vdc
• Consumption		100mA 5Vdc
• Operating temperature		-20°C to +70°C
• BLG/Wi-Fi module	• Frequency	2.4 GHz
	• TX Power	20 dBm
	• Technology	WIFI IEEE 802.11B/G/N, Bluetooth
	• BLE	Version 5.0
• Communication with control boards		Serial communication
• Wi-Fi range		50m in open field
• Protection class		IP30
• Construction material		ABS



The existence of a Wi-Fi network is required in the space where the device will be working.

THE DEVICE

VISUAL APPEARANCE

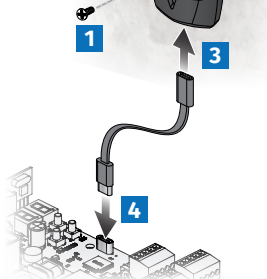
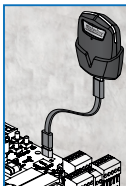
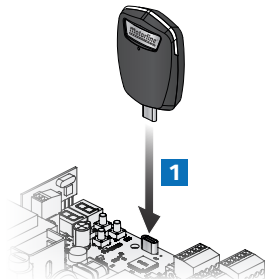


LED indicator

Purple (Intermittent)	Pairing mode (It is waiting to be added on the app)
Red (Fixed)	No network
Red (Intermittent)	Lost connection to the cloud
Blue (Fixed)	Successfully connected to the local network, but not yet connected to the cloud
Blue (Intermittent)	Upgrading Firmware
Green (Fixed)	Connected to the cloud
Green (Intermittent)	Receiving information from the control board it is connected to

INSTALLATION

INSTALLATION TYPES



INSTALLATION

ADD MODULE IN THE APP



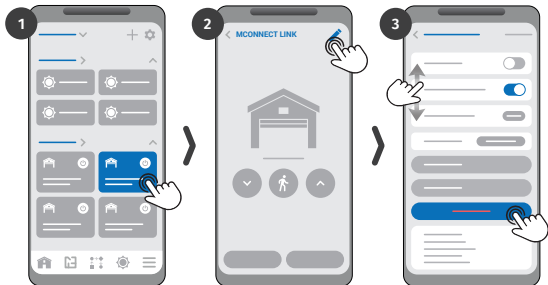
If you haven't downloaded **MCONNECT** application yet, you can download it using the QR Code.



- 1 • Open MCONNECT app.
- 2 • Log in.
- 3 • On the home page press the "+" button at the top right.
- 4 • Press **Add MCONNECT**.
- 5 • Accept all requested permissions.
- 6 • Turn on the power.
- 7 • Check that the module is in pairing mode (flashing purple).
- Note** • if it is not in pairing mode it is necessary to reset.
- 8 • Select the module from the found devices.
- 9 • If you prefer, you can change the top menu to "QR Code" and read the code found on the cover of this manual.
- 10 • Enter the name and password of the Wifi network you are connected to.
- 11 • Wait until the adding process finishes.

INSTALLATION

REMOVE MODULE FROM THE APP



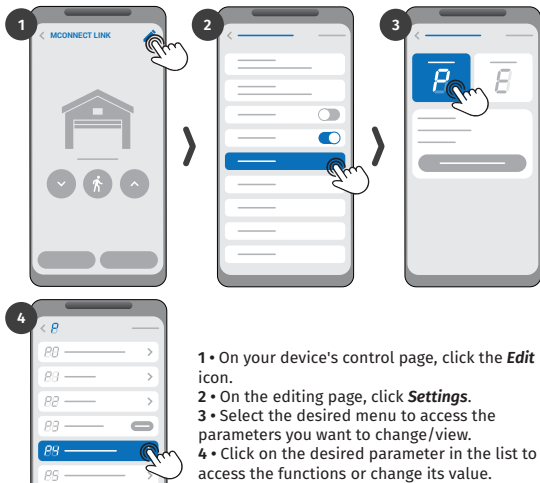
Press on the device you want to remove.

On your device's control page, click the **Edit** icon.

Press **Remove** *MCONNECT* and *Confirm*.

INSTALLATION

CHANGE OR VIEW CONTROL BOARDS PARAMETERS



INSTALLATION

CHANGE OR VIEW CONTROL BOARDS REMOTE CONTROLS



On your device's control page, click the **Edit** icon.

On the editing page, click on **Opening remote controls** (*Total* or *Pedestrian*).

Select the function you want to change or view the value.

INSTALLATION

CHECK CONTROL BOARD DIAGNOSTICS



On your device's control page, click the **Edit** icon.

On the editing page, click **Diagnostics**.

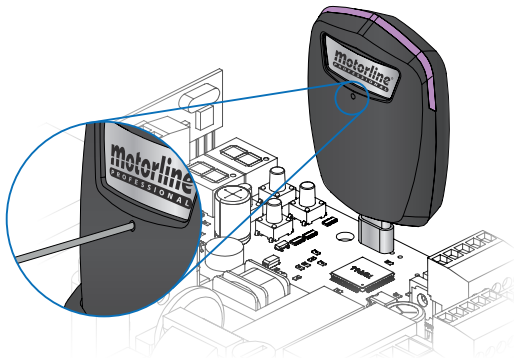
You can test the control board using the buttons and check statuses in the list.

INSTALLATION

RESET

When resetting, the device is no longer connected to the account it is associated with in the application.

Press the reset button until the LED changes to pairing mode (flashing purple), which will confirm successful operation.



TROUBLESHOOTING

INSTRUCTIONS FOR FINAL CONSUMERS/TECHNICIANS

PROBLEM	SOLUTION
The module LED does not light up	Check if the control board is powered.
The module is not in pairing mode (LED flashing purple) and I haven't configured it yet	Press the Reset button located on the back of the module, until it switches to pairing mode.
The module has the red LED	Make sure the network you configured the module on is available. Check if you have coverage of the network to which the module is connected. Check if the network you have configured the module has Internet access.
The module has the blue LED	Check if the network you configure the module has Internet access.
Your control board does not receive information from MCONNECT LINK	Check that the cable is perfectly fitted.

CONFORMITY DECLARATION

Simplified EU Declaration of Conformity

The undersigned **MOTORLINE ELECTROCELOS, S.A., with registered Travessa do Sobreiro, n.º 29, 4755-474 Rio Côvo (Santa Eugénia), Barcelos**, declares that the present type of radio equipment - **MCONNECT LINK Wi-Fi Module** - complies with the Directive 2014/53/EU.

The full text of the declaration of conformity is available at the following internet address:



<https://motorline.pt/certification/mconnect-link>