

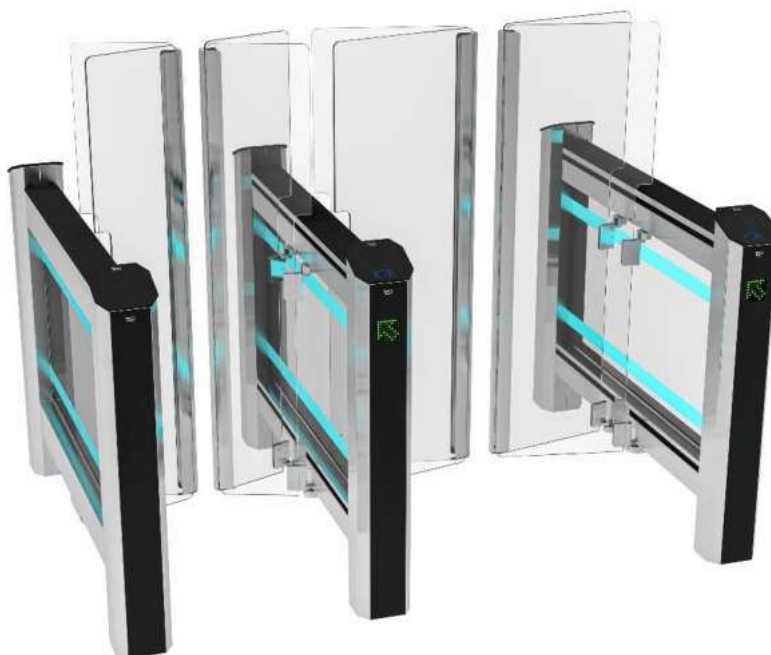


GROUP OF COMPANIES
"TiSO-PRODUCTION" LTD

WAIST-HIGH TURNSTILES

Speed Gate series

SLIDE
with folding leaf



OPERATION AND INSTALLATION MANUAL
AU1A.180 rev.1.0.1

2023
UKRAINE

CONTENTS

INTRODUCTION	3
WARNINGS TO THE CUSTOMER ON SAFE OPERATION OF THE TURNSTILE	4
1. DESCRIPTION AND OPERATION	5
1.1 General Information and Purpose	5
1.2 Specifications	6
1.3 Configuration and Scope of Delivery	7
1.4 Design and operation	8
1.5 Description and operation of controllers as an integral component of the turnstile	11
1.5.1 Main controller AUIA.206.21.20.00	11
1.5.2 Motor controller AUIA.401.00.00-01	14
2 INTENDED USE	17
2.1 Operation limitations	17
2.2 Layout and installation	17
2.3 Installation procedure	18
2.4 Preparation for use	24
2.5 Contingency actions	25
3 MAINTENANCE	26
3.1 General guidelines	26
3.2 Safety Measures	26
3.3 Maintenance procedure	26
4 ROUTINE MAINTENANCE	27
4.1 General guidelines	27
4.2 Possible malfunctions	27
4.3. Adjustment of the zero position of leaf for "Slide"	28
5 TRANSPORTATION AND STORAGE	29
5.1 Turnstile storage	29
5.2 Turnstile transportation	29
6 DISPOSAL	29
Annex A1. Design and dimensions of the "Slide-1" type turnstile with a passage of 550 mm	30
Annex A2. Design and dimensions of the "Slide-1" type turnstile with a passage of 900 mm	31
Annex B. Control panel and connection diagram	32
Annex C.1. Wiring diagram of the Slide 1.1 Master (AUIA.180) Rev 0.1 type turnstile	33
Annex C.2 Wiring diagram of the "Slide" 1.2 type turnstile BM 1.2 Slave (AUIA.180) Rev 0.1	34
Annex D.1. Diagram of the turnstile connection to access control system (ACS)	35
Annex D.2. Diagram of the turnstile connection to access control system (ACS)	36
Annex D.3. Diagram of the turnstile connection to fire alarm (FA)	37
Annex D.4. Diagram of the turnstile connection to control panel	38

INTRODUCTION

This Operation Manual (hereinafter referred to as OM) covers the "SLIDE" type waist-high turnstile (hereinafter referred to as the "turnstile"). The Operation Manual contains information about design, specifications, installation for proper operation and maintenance of the turnstile.

This Operation Manual is prepared in compliance with the specification requirements TU U 28.9- 32421280-005:2018.

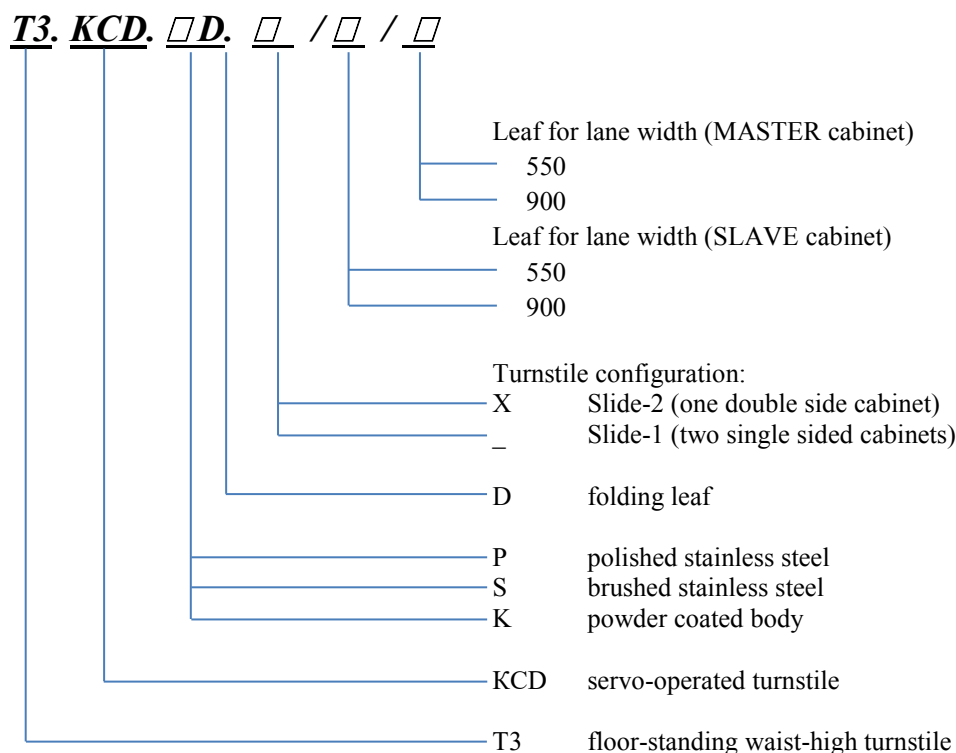
The turnstile shall be serviced only by the qualified staff having the relevant class of permit to work with electrical facilities with voltage up to 1000V and scrutinizing this Operation Manual, obtaining safety instructions and trained for operation and maintenance of the turnstile.

Reliability and durability of the turnstile operation is provided with observation of modes and conditions of transportation, storage, installation and operation. So, fulfillment of all requirements specified in this document is mandatory.

The turnstile "SLIDE" can be installed both singly and in a row. The single turnstile includes two cabinets (left-hand and right-hand), each of which has one glass leaf in the form of folding leaf.

The turnstile row is provided by installation one more or a number of additional cabinets equipped with folding glass leaves on both sides reducing costs and saving space.

Depending on the purpose and design features of the turnstile, the following pattern of reference designation is accepted:



Name		Designation	Code
One side cabinet Master	SLIDE-1.1	AUIA.180.1	T3.KCD.XD
One side cabinet Slave	SLIDE-1.2	AUIA.180.1	T3.KCD.XD
Double side cabinet Master/Slave	SLIDE-2	AUIA.180.2	T3.KCD.XD.X

Example of reference designation of single waist-high turnstile consisting of left-hand and right-hand cabinets made of brushed stainless steel when the turnstile T3.KCD.SD, TU U 28.9- 32421280-005:2018.

Example of reference designation of double waist-high turnstile consisting of left-hand and right-hand and one additional servo-operated cabinets made of polished stainless steel when the turnstile T3.KCD.PD.X according to TU U 28.9- 32421280-005:2018.

Due to regular improvement of the product its design can be modified without degradation of the product features and quality not covered by this Operation Manual.

WARNINGS TO THE CUSTOMER ON SAFE OPERATION OF THE TURNSTILE

These warnings are designed for ensuring of safety during operation of the turnstile to prevent violation of safety characteristics by improper installation or operation. These warnings are aimed at drawing attention of the customer to safety problems.

GENERAL WARNINGS

The Operation Manual is an integral part of the product and it shall be handed over to the customer. The OM shall be kept for later use and consulted for clarifications if required. If the turnstile is resold, handed over to another owner or transported to another place, make sure that the OM is enclosed to the turnstile to be used by new owner and/or maintenance staff during installation and/or operation.

Safety measures and requirements specified in this in this OM must be observed:

- the turnstile must be connected to ground loop prior to operation;
- the turnstile should be connected to AC network with parameters specified in paragraph 1.2 "Specifications";
- inspection, adjustment and repair should be performed only after the turnstile is deenergized.

After purchasing of the turnstile it should be unpacked and its integrity should be checked. In case of doubt in integrity of the turnstile it should not be used and the customer should refer to the supplier or to the manufacturer.

Packing accessories (wooden pallet, nails, clips, polyethylene bags, cardboard etc.) as potential sources of hazard must be removed to unacceptable place prior to proper use of the turnstile.

As electric shock protection device the turnstile is related to 01 protection class according to GOST (State Standard) 12.2.007.0-75 and is not intended for operation in explosive and fire-hazardous areas by the "Rules for design of electrical installations".

Using of the turnstile for unintended purpose, improper installation, nonobservance of conditions of transportation, storage, installation and operation, specified by this OM, may result in damage to people, animals or property for which the manufacturer is not responsible.

1. DESCRIPTION AND OPERATION

1.1 General Information and Purpose

1.1.1 Purpose:

The Slide turnstile with folding high leaves guarantees effective protection and is a stylish original solution for your object.

The motorized turnstile is designed for pedestrian movement control at access points of industrial enterprises, banks, stadiums, administrative facilities etc. controlled by access control system (from proximity card readers) or manually (from manual control panel).

The folding system of the turnstile leaves has a robust and reliable design. Height of leaves eliminates the possibility of unauthorized passage and helps to avoid transfer of anything above the turnstile, as well as over-jumping it. Special design allows to arrange even 900 mm passage which can be used for people with special needs.

The turnstile traffic flow capacity without personal identification is at least 30 persons per minute in one direction.

1.1.2 The turnstile dimensions and weight correspond to the values specified in Table 1.

Table 1

Designation of modification type	Width of lane	Dimensions, mm			Max. weight, kg
		Width of set for one lane (W)	Unit height with leaf, (H)	Length (L)	
Slide-1	550	864	1500	1432	160*
Slide-1	900	1214			180*

* When the turnstile with more than two lanes is ordered:

$$W = 550 \cdot X + 161 \cdot Y,$$

where X is the number of lanes;

550 – width of lane, mm;

161 – width of cabinet frame, mm;

Y – total number of the turnstile cabinets, pcs.

Example of calculation of size W for T3.KCD.PD.4 (four lanes): $W = 550 \cdot 4 + 161 \cdot 5 = 3160$ mm

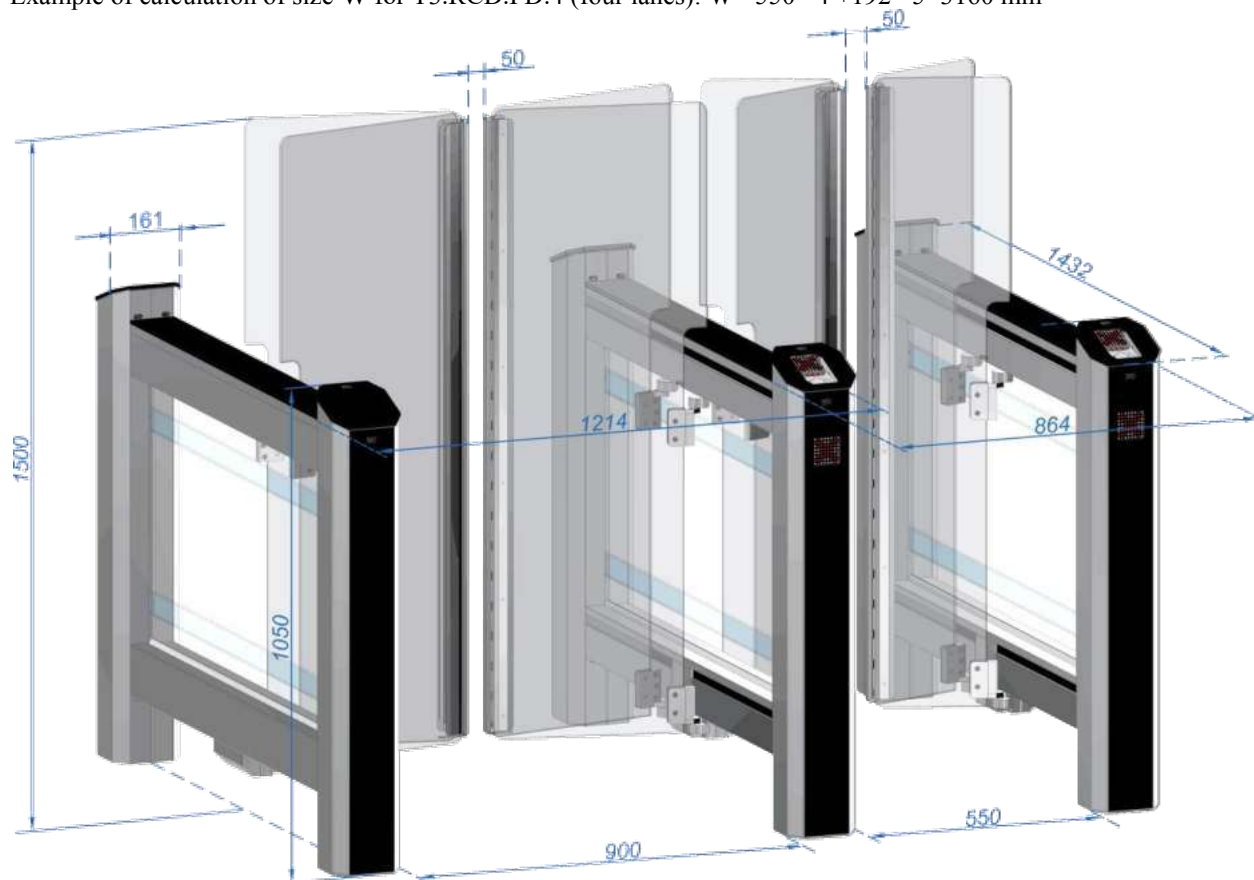


Fig.1 – Type turnstile «Slide»

1.1.3 The turnstile component identification codes are specified in Table 2.

Table 2

Description of the turnstile component	Order code	Dimensions, mm,			Max. weight, kg
		H	W	L	
One side cabinet Slide-1.1 Master AUIA.180.1 Slide-1.2 Slave AUIA.180.1	T3.KCD.xD	1500	161	1432	77* 78*
Double side cabinet Slide-2 Master/Slave AUIA.207-03.2	T3.KCD.xD.X				100*

1.1.4 The operation condition parameters according to GOST 15150-69 are specified in Table 3 for climatic modification NF4

Table 3

Operation conditions	Parameter value for climatic modification NF4
Ambient air temperature	+1°C to +40°C
Relative air humidity	80% at +25°C (non-condensign)
Ambient air allowable pressure	84 to 106,7 kPa
Transportation temperature range	- 50°C to + 50°C
Storage temperature range	+ 5°C to + 40°C
Structural design category	L3
Altitude above sea level	up to 2000m
Environment	Explosion-proof, does not contain current-conducting dust, aggressive gases and vapours in concentration destroying isolation and metals, disturbing normal operation of the equipment installed in turnstiles
Installation site	In enclosed spaces in the absence of direct impact of precipitations and solar radiation
Operating position	Vertical, deviation from vertical position no more than 1° to any side is allowed

1.2 Specifications

Key parameters of the turnstile are specified in Table 4.

Table 4

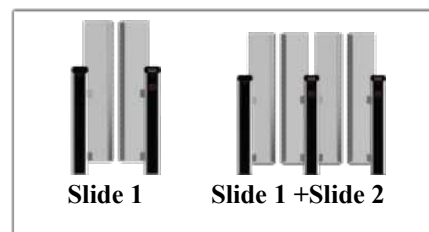
Parameter description	Parameter value	
Maximum access way width	550 mm	900 mm
Traffic flow capacity in free access mode, at least	30 pers/min.	25 pers/min.
Opening/closing time	0,7 s	1,0 s
Power supply voltage: – AC power supply (primary) – DC power supply (secondary)	100 ÷ 240 V ~50/60 Hz 12 V	
Maximum power consumption	160 W	
Index of protection according to EN 60529	IP41	
Mechanism	BMDrive® servo-driven (BLDC)	
Locking system	FoldEmLock®	
In case of power failure	Fail-safe (leafs can be opened manually)	
LED lighting: - display showing access status - card reader area - glass partitions - floor	DotLights® RFIDLights® EdgeLights® FloorLight®	
Reliability indices		
Mean time to repair (without delivery time of spare parts, tools and accessories)	– at most 6 hours	
Mean time to failure	– at least 10 000 000 accesses	
Mean service life between overhauls	– at least 10 years	

1.3 Configuration and Scope of Delivery

1.3.1 The turnstile modification depends on the number of lanes:

1) For arrangement of single access way the turnstile "Slide-1" is a set of two similar single side cabinets (Master and Slave) with one folding glass leaf (reference designation T3.KCD.XD);

2) For arrangement of two or more lanes the turnstile "Slide-1" is a set of two single side cabinets (reference designation T3.KCD.XD) and one or more additional double-sided cabinet "Slide-2" (Master/Slave) with two folding leafs (reference designation T3.KCD.XD.X).



1.3.2 Design of the single turnstile of "Slide-1" type

The single turnstile consists of two single sided cabinets (*Slave* and *Master*).

The single leaf cabinet housing includes:

- frame;
- end panel;
- top, side and bottom linings;
- glass top lid of stand;
- glass top;
- folding glass leaf;
- two LED display.

Inside the cabinet there are installed:

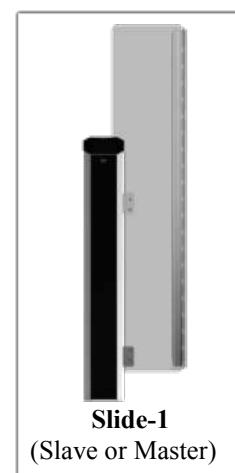
- BMDrive® servo-drive;
- Ten access sensors**.

The cabinet design provides a space for installation of proximity identification card reader.

The cabinet has built-in components:

- controllers;
- power supply unit.

Optionally the cabinet can be completed with battery*. The single turnstile's control panel equipped with power supply unit, circuit breaker is installed only in the cabinet *Master* gate from the protected area side.



1.3.3 Design of the "SLIDE-1" and "SLIDE-2" type turnstile installed in a row

The turnstile is a set of two single side cabinets (*Slave* and *Master*) and additional cabinet (*Slave/Master*) with two folding glass leaves. The number of additional cabinets should be specified in order.

The additional cabinet housing includes:

- frame;
- top, side and bottom linings;
- glass top lid of stand;
- glass top;
- two glass leafs;
- four LED displays.

There are installed inside additional pedestal:

- two BMDrive® servo-drives;
- twenty access sensors.

The cabinet design provides a space for installation of proximity identification card reader*.

The additional cabinet has built-in components:

- controllers;
- power supply unit.

Optionally the additional cabinet can be completed with battery* (capacity 4 A•).



1.3.4 The turnstile material of manufacture is carbon steel subject to painting, brushed stainless steel or polished stainless steel.

Table 5

Housing designation and modification		Coding
Standard	brushed stainless steel AISI 304	T3.KCD. SD
Optional	brushed stainless steel AISI 316	T3.KCD. SD
	polished stainless steel AISI 304	T3.KCD. PD
	polished stainless steel AISI 316	
	carbon steel subject to painting RAL	T3.KCD. KD
Glass leaves designation		
	tempered glass (8 mm)	
Top glass designation and modification		
	stainless steel top with glass inserts	

1.3.5 Scope of Delivery

The turnstile can be delivered as a set (kit of cabinets depending on the number of lanes).

The turnstile is delivered by one package.

1.4 Design and operation

1.4.1 Turnstile design (See Fig. 2)

The body of the turnstile cabinet is a frame on which are mounted stainless steel side lining **7**, bottom lining **8** from stainless steel, decorative lid **6**, 8 mm of tempered glass partition **9**. Top lid of stand **1** is fixed on stand of control panel **15** from the top (lining material is defined by order).

Six infrared sensors **12**, installed on top lining and four infrared sensors in the turnstile bottom lining from the access way side, are designed for detection of turnstile access, prevent closing of folding leaves **10** when a person is in close proximity to them and minimize the probability of being injured during passage through the turnstile.

Folding glass leaf is made of two 10 mm thick-tempered glass that fastened with a reliable hinge **16** and fixed with glassholders **11** to the mechanism of movement of the leaves.

Each leaf is actuated by separate BMDrive® gear motor **14** and opens along the turnstile cabinet, i.e. additional cabinet (Master/Slave) is equipped with two servo drives BMDrive® **14** (one per each leaf).

The turnstile status shows a display board **3**. A permanent glow blue indicator means the initial state of the turnstile. When an unauthorized pass is attempted, the red indication flashes, the sound signal is activated. When the command to open is received, the indication changes to green from the side of the permitted passage. If an attempt of unauthorized passage occurs when the folding leaves **10** are open, then the leaves will be closed if there are no obstacles in their access zone.

Designation conditions:

- 1 – top lid of stand;
- 2 – end panel;
- 3 – LED display (DotLights®);
- 4 – place for identification card reader with LED (RFIDLights®);
- 5 – top lid (solid glass);
- 6 – top lining;
- 7 – side lining;
- 8 – bottom lining;
- 9 – glass partition with LED (EdgeLights®);
- 10 – folding glass leaf;
- 11 – leaf's holder;
- 12 – IR access sensors;
- 13 – IR safety / over jumping sensors
- 14 – BMDrive® gear motor;
- 15 – stand of control panel;
- 16 – leaf hinge;

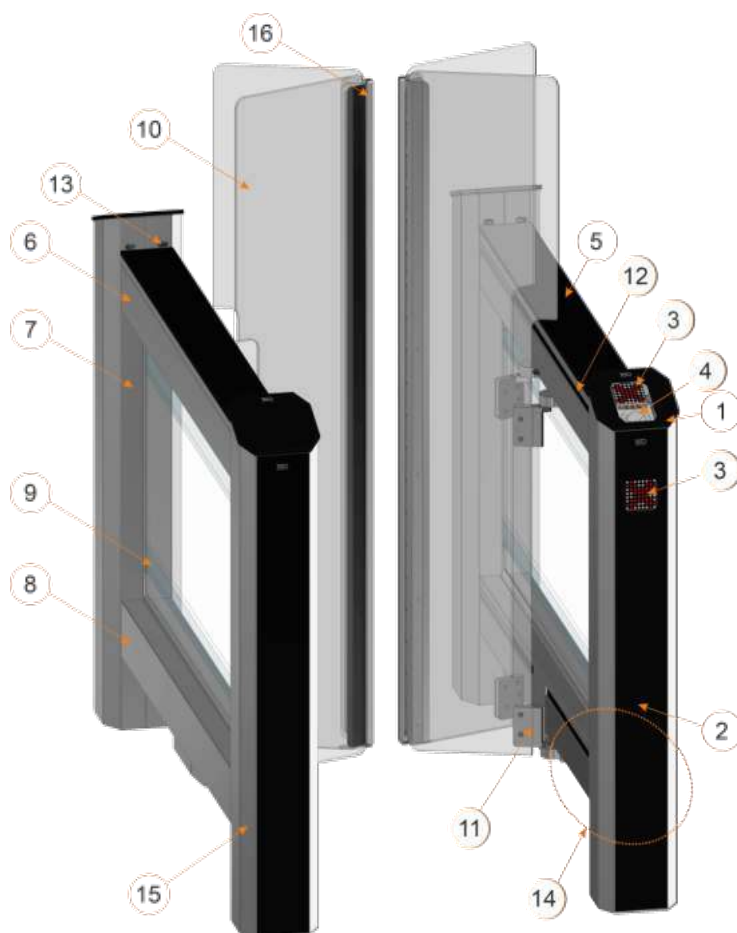
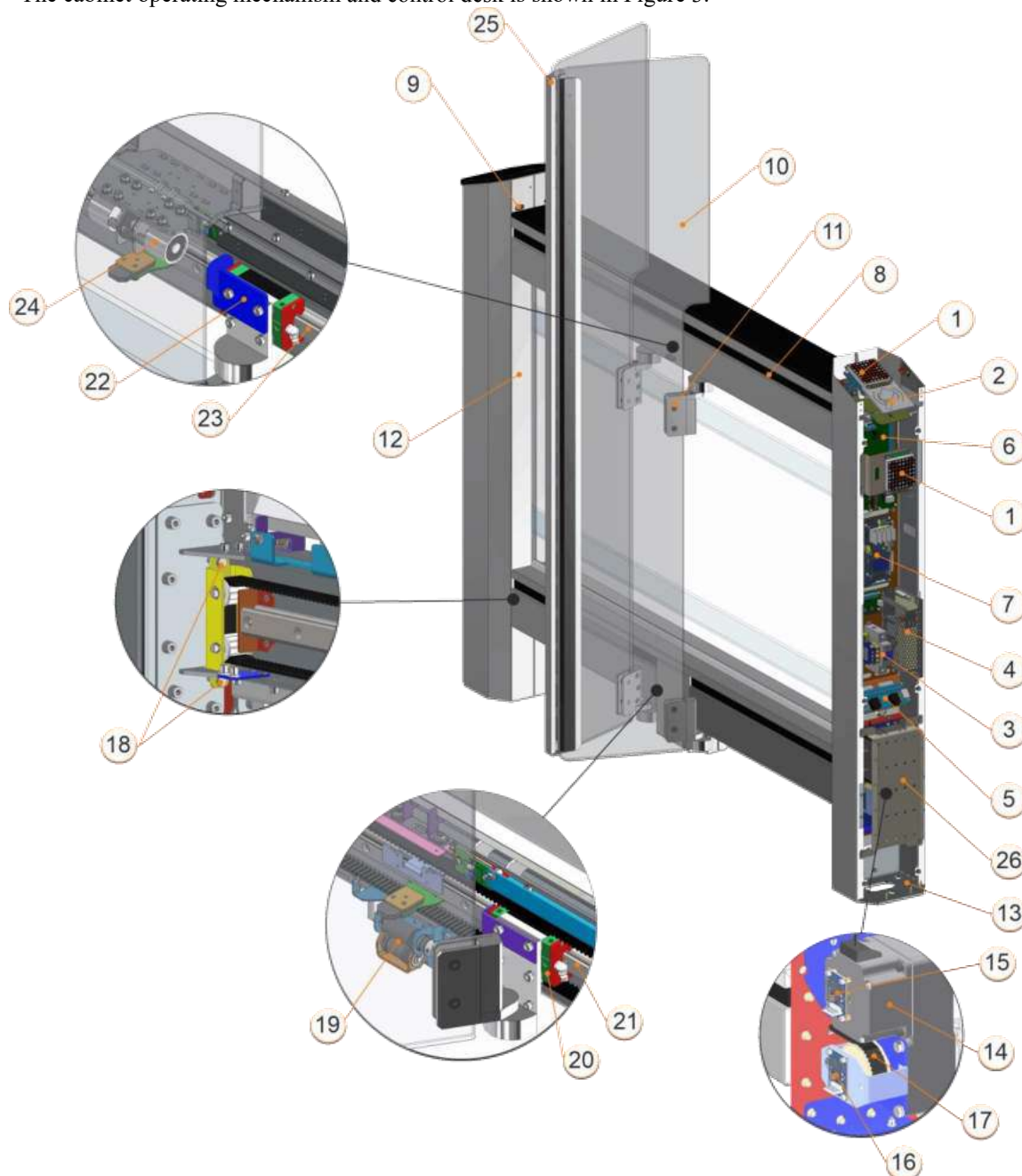


Fig. 2 – Design of the turnstile

1.4.2 General appearance of the turnstile operating mechanism and control desk

The cabinet operating mechanism and control desk is shown in Figure 3.



- 1 - LED display (DotLights®);
- 2 - place for identification card reader with LED (RFIDLights®);
- 3 - circuit breaker;
- 4 - power supply unit;
- 5 - link board for Master and Slave;
- 6 - main controller АЮИА.206.21.20.00;
- 7 - motor controller АЮИА.401.00.00-01;
- 8 - IR access sensors;
- 9 - IR safety / over jumping sensors;
- 10 - folding glass leaf;
- 11 - leaf's holder;
- 12 - side panels;
- 13 - turnstile base;

- 14 - BMDrive® gear motor;
- 15 - motor shaft position sensor;
- 16 - leaf position sensor;
- 17 - belt;
- 18 - belt tensioner
- 19 - leaf retraction mechanism
- 20 - bottom linear ball slide
- 21 - bottom linear guide
- 22 - upper linear ball slide
- 23 - upper linear guide
- 24 - lock electromagnet
- 25 - leaf hinge
- 26 - gear motor cover;

Fig.3 – Operating mechanism of the turnstile "Slide-1"

1.4.3 Principle of operation

1) Access cycle:

1. 1. In the initial state, the turnstile glass leaves are located perpendicular to the body blocking the access.

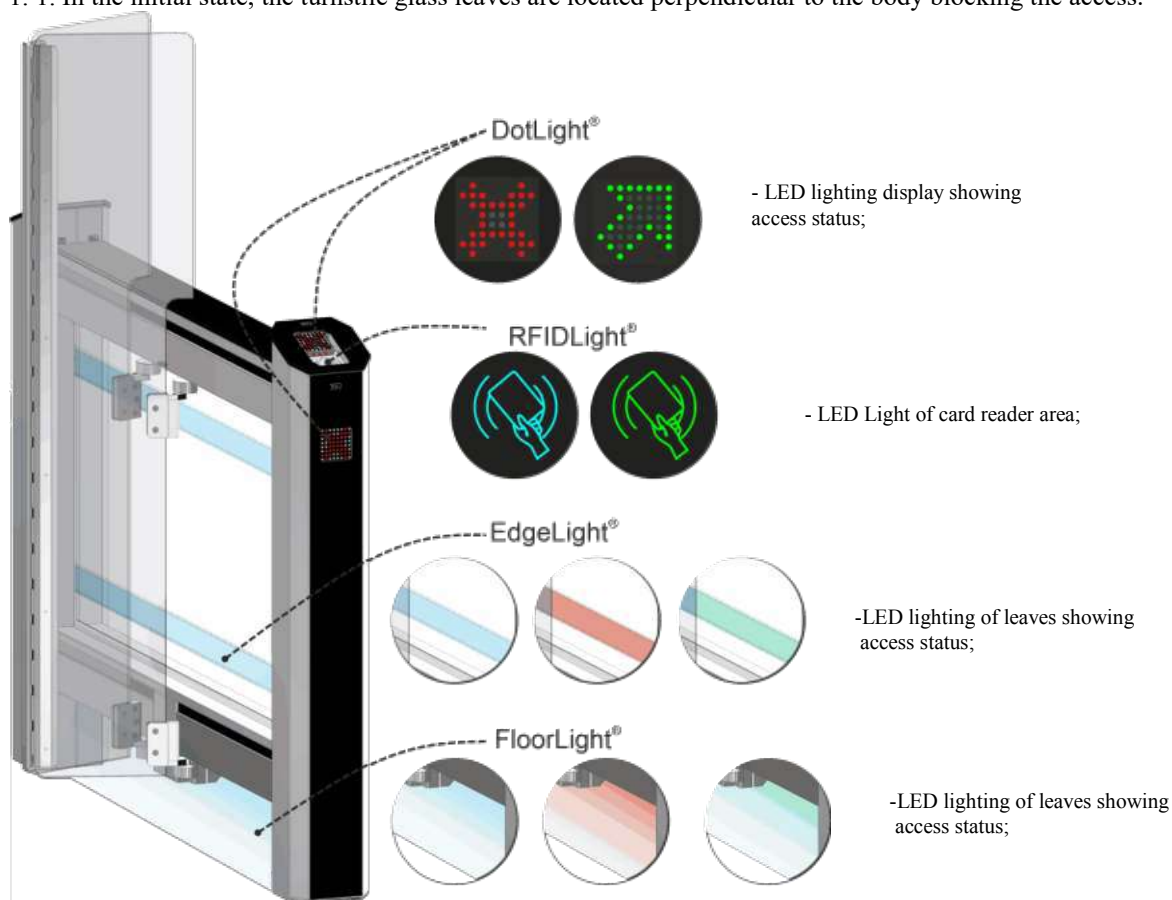


Fig.4 – Light indication of the turnstile status

2) Access cycle:

1. In the initial state the turnstile glass leaves are located perpendicular to the body blocking the access.
2. The turnstile is opened for access in the direction "A" or "B" after the appropriate command from ACS or control panel is issued.
3. Green arrow is lit on LED display and glass leaves go fully to slots, i.e. they open. A pedestrian is able to access through the turnstile freely.
4. After pedestrian exits from control area, the "closed" mode is set until next access. Blue LED is lit. Leaves are reliably closed preventing attempts of unauthorized access.

More detailed description of the turnstile operation modes is given in section 1.5 "Description and operation of controller as an integral component of the turnstile".

12V DC power voltage is provided by power supply unit.

In case of mains power supply failure, the turnstile is automatically switched to power supply from 12V, 4A•h battery (optional), which ensures the turnstile's operation within 2 hours.

The turnstile wiring and connection diagrams are shown in Annex B.

« Standby mode »

« Access authorized »

« Access denied »



Fig.5 - LED display status lights

1.5 Description and operation of controllers as an integral component of the turnstile

1.5.1 Main controller AUIA.206.21.20.00

1.5.1.1 Controller AUIA.206.21.20.00 is shown in *Figure 6*.

1.5.1.2 Description of operation

The controller provides algorithm of operation of the whole turnstile. It is assembled on the card from foil-clad textile laminate of 120 x 80 mm size, on which electronic components and terminals for connection to other turnstile units as well as for connection to control peripherals (ACS, control panel etc.) are installed.

The controller initiates signal for 10 infrared transmitters and receive signal from 10 infrared receivers that enables to determine human (or object) presence in the turnstile access area with high probability. Furthermore, the controller controls light and sound indication, receives commands from control panel using interface RS-485, receives commands and initiates report signals for ACS via signal inputs and outputs as well as controls operation of motor controllers (AUIA.401.00.00-01).

The controller and therefore the turnstile can be in the following modes:

- "INITIAL STATE".
- "SINGLE ACCESS IN THE DIRECTION A".
- "SINGLE ACCESS IN THE DIRECTION B".
- "SINGLE ACCESS IN BOTH DIRECTIONS".
- "FREE ACCESS IN THE DIRECTION A".
- "FREE ACCESS IN THE DIRECTION B".
- "FREE ACCESS IN BOTH DIRECTIONS".
- "LOCKING OF ACCESS IN THE DIRECTION A".
- "LOCKING OF ACCESS IN THE DIRECTION B".
- "LOCKING OF ACCESS IN BOTH DIRECTIONS".
- "ALARM".

«INITIAL STATE»

The turnstile is in this mode during energization and after completion of the turnstile access, if during access the mode is not changed to "LOCKING", "FREE" or "ALARM". In this mode red LED is constantly lit on both LED boards, sound indication is OFF, access is blocked by leaves.

«SINGLE ACCESS»

The turnstile goes to this mode when command "SINGLE ACCESS A/B" comes from control panel via interface RS-485 or when signal inputs "INP1" ("ACCESS A TO BE OPENED") or/and "INP5" ("ACCESS B TO BE OPENED") are closed on common wire (terminal "GND"). In this case if command comes via interface RS-485, the access start waiting time is 5 sec. and when signal inputs are short circuited the turnstile will be waiting for access start while input is closed.

Green arrow is lit on LED display from the side of permitted access and red cross is lit from the side of denied access. Leaves are hidden in lining making access free. Pedestrian is able to access through the turnstile. If access start time is up and access is not started (the first IR barrier in the direction of movement was not blocked), the turnstile returns to "INITIAL STATE". If within the above time period access is started, controller generates the signal "ACCESS IS OCCUPIED" (outputs "OUT1" or/and "OUT2") and starts tracing position and direction of pedestrian movement in the turnstile access way, analyzing 6 IR barriers. As soon as pedestrian is behind folding leaves they are closed, the controller generates the signal "DETECTION OF ACCESS" of 0,3 second duration (outputs "OUT3" or "OUT4") and LED display is switched from green to red. After a person passes through the turnstile, the controller removes signal "ACCESS IS OCCUPIED" and returns to "INITIAL STATE".

«FREE ACCESS»

The turnstile goes to this mode either upon command "FREE ACCESS A/B" arrived via interface RS-485 from control panel or if during "SINGLE ACCESS" initiated by signal on input "INP1" ("ACCESS A TO BE OPENED") or/and "INP2" ("ACCESS B TO BE OPENED") at the end of 0,3 sec. after the signal "DETECTION OF ACCESS A" or "DETECTION OF ACCESS B" is removed by controller, the signal on the relevant input "INP1" or "INP2" was not removed.

In this mode folding leaves are constantly opened in the direction of free access, green arrow is blinking on LED display from the side of permitted access. Thus every turnstile access is traced and the signal "DETECTION OF ACCESS" of 0,3 second duration is generated to the relevant output («OUT3» or "OUT4").

In this state the turnstile will be until arrival of command "CANCELLATION OF FREE ACCESS" via interface RS-485 or until removal of signals from "INP1" or/and "INP2" depending on the cause of going to the free access mode.

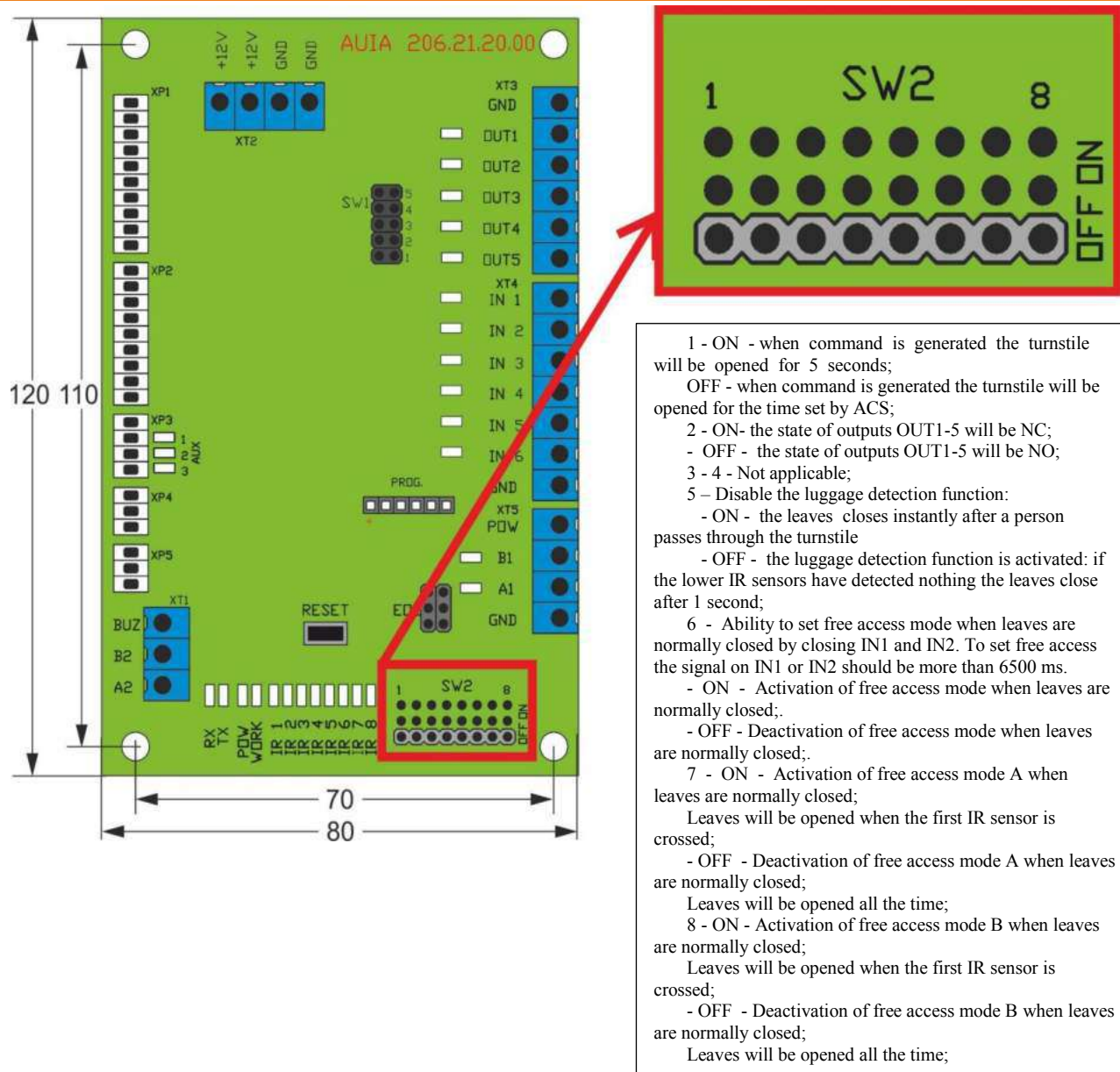


Fig.6 – Appearance and configuration of controller AUJA.206.21.20.00

«LOCKING OF ACCESS»

The turnstile goes to this mode only upon command "LOCKING OF ACCESS A/B" arrived via interface RS-485 from control panel.

Thus red LED is blinking from the side of locked access, folding leaves are in closed state (if turnstile is not open for free or single access from opposite side), controller does not respond to signals of inputs "INP1" ("ACCESS A TO BE OPENED") or/and «INP2» ("ACCESS B TO BE OPENED") respectively.

The lock mode prevails over single and free access mode. It means that access can be locked at any time, thus, if within the folding leaves closing area there is no any obstacle they will be closed.

The controller will be in this mode until arrival of command "CANCELLATION OF ACCESS LOCKING" via interface RS-485 from control panel.

«ALARM»

The turnstile goes to this mode from any above mentioned mode in case of unauthorized access attempts. Meanwhile red LED is frequently blinking (4 times per second), siren alarm is generated on the turnstile and control panel and output "OUT5" is activated on the controller card. If the turnstile was opened, then folding leaves would be closed if there were no obstacles in the closing area. The turnstile will return to the mode preceding the "ALARM" mode as soon as causes of this mode disappear. In this case the output "OUT5" will go to passive state, siren alarms on control panel will be off and folding leaves and light indication will be set according to the current mode.

The purpose of the controller's contacts intended for connection to peripherals is specified in Table 6

Table 6

Connector/ Contact No	Designation	Direction	Purpose	Signal parameters and description		
1	2	3	4	5		
XT4/1	INP1 ("TO BE OPENED A")	ENTRY	"TO BE OPENED FOR SINGLE/FREE ACCESS"	1) logical «0» (0 ÷ 2,2) V; 2) logical «1» (3 ÷ 5) V; 3) active level of signal (factory setting) logical «0» 4) voltage on open input < 5 V		
XT4/2	INP2 («ОТКРЫТЬ В»)	ENTRY				
XT4/3	INP3 («PANIC»)	ENTRY			"SWITCHING TO PANIC STATE" command	
XT4/4	INP4	ENTRY	Not applicable			
XT4/5	INP5	ENTRY				
XT4/6	INP6	ENTRY				
XT4/7	GND		COMMON WIRE			
XT3/1	GND		COMMON WIRE			
XT3/2	OUT1 («ACCESS A IS OCCUPIED»)	EXIT	Signal is generated from the moment of blocking of the first IR barrier in the direction of movement and is removed after cancellation of the latter	1) type of output – open collector; 2) peak voltage on privacy key 55V; 3) peak current of public key 100mA; 4) resistance of public key (5 ÷7) Ohm; 5) active level of signal (Factory setting) – logical «0» (connection on GND)		
XT3/3	OUT2 («ACCESS B IS OCCUPIED»)	EXIT				
XT3/4	OUT3 («DETECTION OF ACCESS A»)	EXIT	Signal appears during barring of the second last IR barrier and continues 0,2 sec.			
XT3/5	OUT4 («DETECTION OF ACCESS B»)	EXIT				
XT3/6	OUT5 («ALARM»)	EXIT	Output is active in case of unauthorized access attempt			
XT5/1	POW		«+» power supply		1) Power supply voltage 12V; 2) Consumption current < 150 mA	
XT5/2	B1		It is used for data transmission via serial port. It is used for connection of control desk.	Interface RS-485		
XT5/3	A1			Interface RS-485		
XT5/4	GND		COMMON WIRE			
XT1/1	BUZ		Output for connection of audible alarm. The output is active in case of unauthorized access	1) type of output – open collector; 2) peak voltage on privacy key 60V; 3) peak current of public key 250 mA; 4) resistance of public key (0,48÷ 640) Ohm; 5) active level of signal (Factory setting) – logical «0» (connection on GND)		
XT1/2		B2				Interface RS-485
XT1/3		A2				Interface RS-485
XT2/1	+ 12V		«+» per supply (controller energization)	1) Power supply voltage 12V; 2) Consumption < 150 mA		
XT2/2	+ 12V					
XT2/3	GND (common)		«-» power supply (common wire)			
XT2/4	GND (common)					

1.5.2 Motor controller AUIA.401.00.00-01

1.5.2.1. Description of motor controller AUIA.401.00.00-01

The controller AUIA.401.00.00-01 is designed to control BMDrive® gear motors, which drives the turnstile leaves in motion. At each passage of turnstile installed pair of controllers AUIA.401.00.00-01: the first controller drive the leaf in the Master cabinet, the second controller drive leaf in the Slave cabinet.

BMDrive® gear motors control are performed based on the signals coming from leaf position sensor «XP6», motor magnet sensor «XP3», hall sensors "XP12" built into the gear motors, as well as from current sensors installed on the controller.

Control signals from the main controller AUIA. 206.21.20.00 come to inputs XP2/ «SW1, SW2, SW3» of Master controller AUIA.401.00.00-01.

Master and Slave controllers AUIA.401.00.00-01 are synchronized with each other through the CAN communication line "XP10".

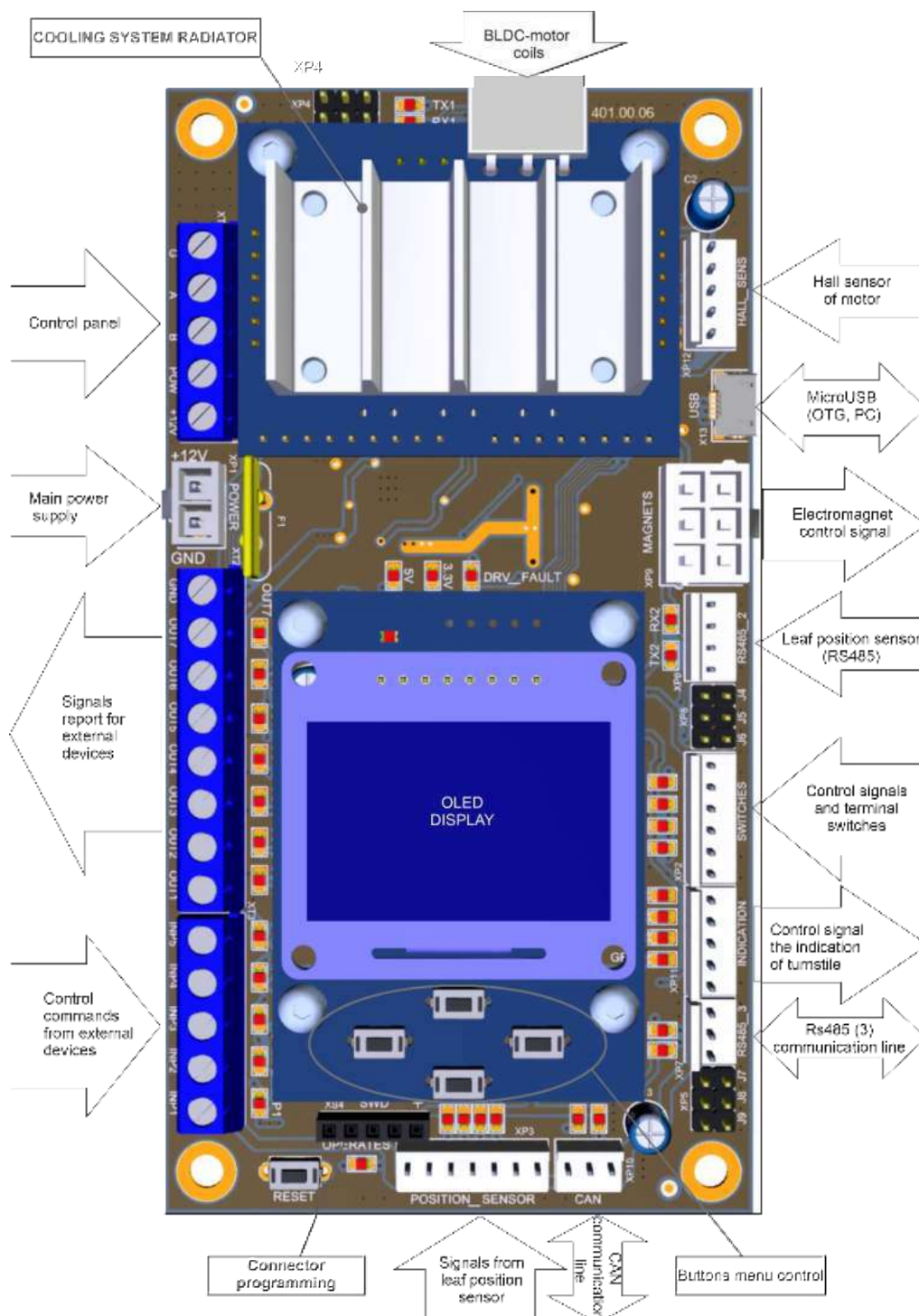
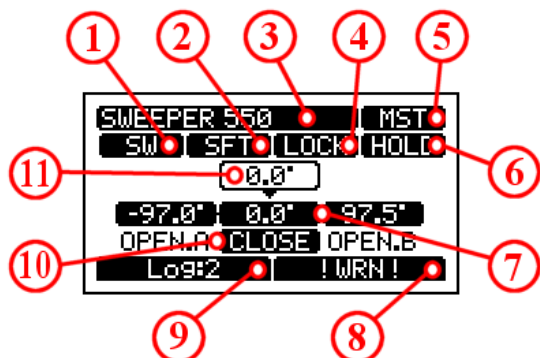


Fig.7– Appearance of controller AUIA.401.00.00-01

1.5.2.2. Description of the main page of the controller

An OLED display and 4 control buttons are installed on the front side of the AUJA.401.00.00-01 controller for the displaying the current state of the controller and for configuration settings at menu

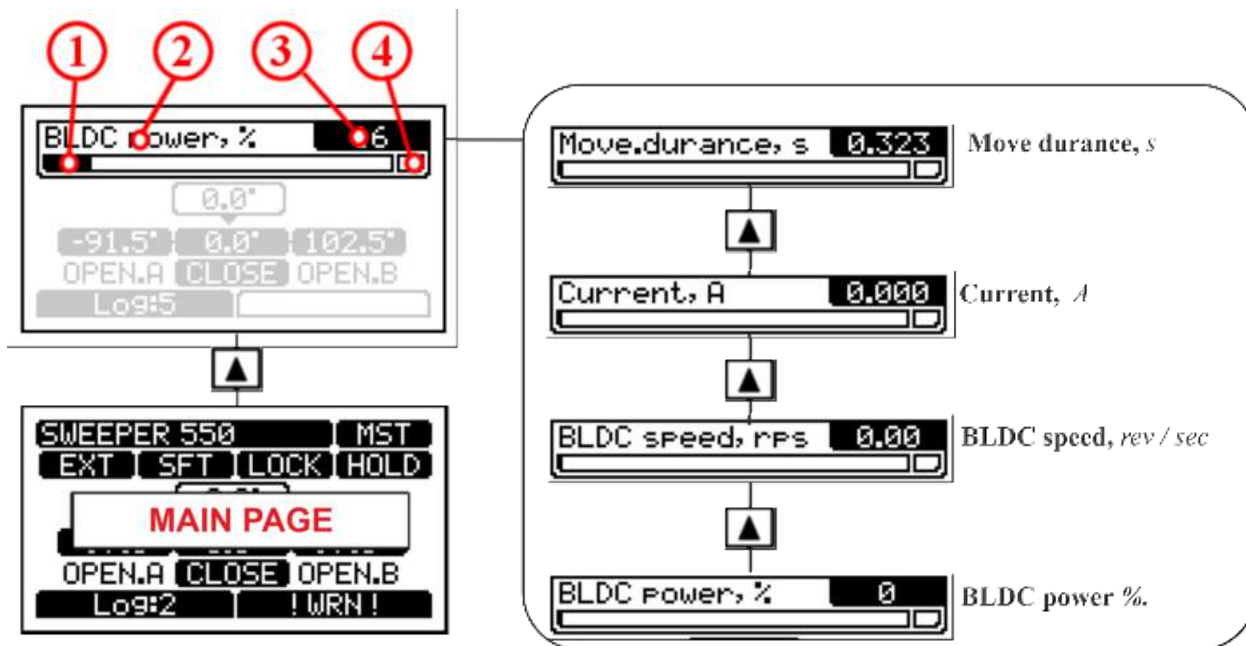
After initialization of the controller, the **main page** of the menu is displayed on the screen.



1. Control mode indication
2. PANIC- and SAFETY-mode indication of the turnstile
3. Type and model indication of the turnstile
4. Locking mechanism status indication
5. Solo/Master/Slave modes indication
6. BLDC-drive modes indication
7. Leaf's working range indication
8. Errors and warnings system indication
9. Number of log entries indication
10. Actual control commands indication
11. Actual leaf position indication

Fig.8 – Structure of the main page indications

1.5.2.3. Additional indication of the main page on the OLED display:



Symbols of additional indication of the main page menu

- ① - parameter value bar in a Range min - max
- ② - parameter name
- ③ - numeric parameter value
- ④ - indicator of reaching and / or exceeding the parameters of the MAX value

Fig.9 – Structure of the additional indication of the main page menu

1.5.2.3. Other pages (functions) of OLED display:

You can toggle to other pages (functions) of display by holding pressed the corresponding button more than 2 seconds:

- ◀ 2sec - toggle to the system log page
- ▶ 2sec - toggle to the current errors page
- ▲ 2sec - toggle to the paired screen control mode of Slave-cabinet or Master-cabinet motor controller
- ▼ 2sec - toggle to the system menu page

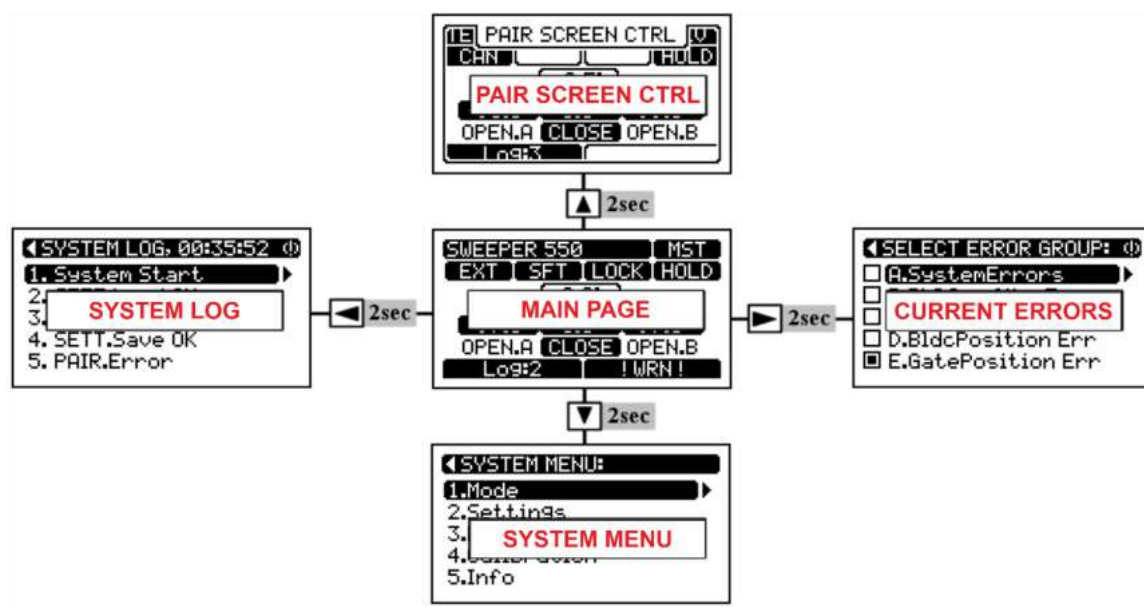


Fig.10 – Switching to other pages (functions) of the menu

1.5.2.4. The purpose of the controller contacts AUIA.401.00.00-01

Refer to the user manual “Controller AUIA.401.00.00-01 of BMDrive motor control” for more information about the operation and setting of the controllers.

2 INTENDED USE

2.1 Operation limitations

2.1.1 The turnstile must be used in the environment specified in p. 1.1.4 of this document subject to the specifications listed in section 1.2.

2.1.2 It is forbidden to use the turnstile:

- at the presence of mechanical rattle in movable parts of the turnstile;
- when metalwork of the turnstile and its components and accessories are mechanically damaged.

2.1.3 List of special operation conditions

- Mean time of the turnstile access (in single access mode) equals to 2 sec.
- The turnstile's mechanism allows emergency access by means of antipanic device.
- The force applied by accessor to barrier rod should not exceed 400H.
- Escape door, portal or cabinet can be installed near the turnstile to increase the turnstile traffic flow capacity in case of emergency.



IT IS FORBIDDEN:

- 1) to misuse the turnstile (see section 1 "description and operation");
- 2) to use the turnstile unearthed;
- 3) to use heating pipes and radiations as well as pipes of central water supply for earthing
- 4) to repair and adjust without deenergization;
- 5) to relocate the objects exceeding the passageway width through the turnstile access area;
- 6) to jerk and impact barrier rods, led display or other parts the product, which may cause their mechanical damage;
- 7) exert force on leaves more than 400 H (40 kg) in "access locking" mode

2.2 Layout and installation

2.2.1 The turnstile and components of scope of supply to be delivered to installation site in factory packing. The turnstile to be unpacked only on installation site.

2.2.2 Preparation of the turnstile for installation (dismounting) and commissioning to be performed according to this OM with mandatory observation of safety measures specified in p. 2.1 and general electrical safety code.

2.2.3 Safety Measures:

- Installation to be performed only by the persons briefed on safety and studied this manual;
- Only serviceable tools to be used during installation of the turnstile;
- Connection of all cables to be performed only when power supply is OFF;
- **Cables to be laid in compliance with electric code;**
- The turnstile to be installed by at least 2 installers.



WARNING:

The manufacturer warns of necessity to keep seals of the manufacturer on the turnstile's component parts!

The turnstile damage occurred during transportation is not covered by the manufacturer's warranty obligations

2.2.4 Tools and accessories to be used (Fig.11):

- puncher;
- concrete drills (according to diameter of anchors included in the turnstile scope of delivery;
- extension cord;
- kit of end and pin wrenches;
- kit of hexagons;
- kit of screwdrivers;
- hammer;
- multimeter (tester);
- measuring tape ;
- marker;
- pliers, side cutters;
- builder's level.



Fig.11 - Tools and accessories for layout and installation

2.2.5 Slide type turnstile layout options

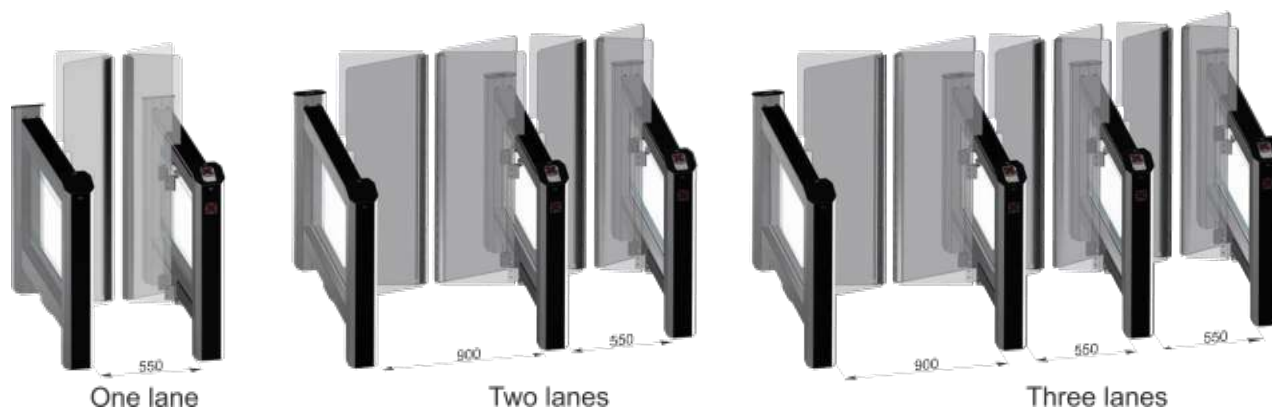


Fig. 12 – SLIDE type turnstile layout options

2.3 Installation procedure

The turnstile installation procedure is as follows:

- 1) The package integrity to be checked prior to unpacking. If package is damaged, then damages to be fixed (picture to be taken, damage report to be made).
- 2) The turnstile to be unpacked and inspected for defects and damages as well as completeness to be checked according to the turnstile data sheet;



WARNING:

When the turnstile damages are detected or in case of shortage of delivery installation work to be stopped and the turnstile supplier to be referred to.

The turnstile installation and fixation to be performed only after all electric cables to be connected to the turnstile are pulled

The turnstile is fixed by means of Redibolt (with jacket and screw) included in the scope of delivery

- 3) Turnstile dismantling and relocation:

To provide access to fixation holes and terminal blocks it is required to (Fig.13):

- the top lid of stand to be removed (1);
- remove the end panel by unscrewing the screws (2) on the stand;

- unscrew the three screws that fix the turnstile base to the shipping container from both sides (3) and remove the turnstile from pallet;

- 4) Make sure that the turnstile installation area is ready as follows:

- The installation area surface to be flat;
- Thickness of concrete blinding coat under installation area to be at least 150 mm.

- 5) The turnstile fixation holes to be marked on the area surface according to Figure 14 (for turnstiles with 550 mm and 900 mm lanes). The turnstile itself can be used as a template.

- 6) The relevant holes to be drilled on the surface according to the marking due to diameter of anchors (12×120M10) for the turnstile fixation included in the scope of delivery.

- 7) Anchor jackets to be inserted into the prepared holes.



Fig. 13 – Turnstile dismantling and remove from pallet

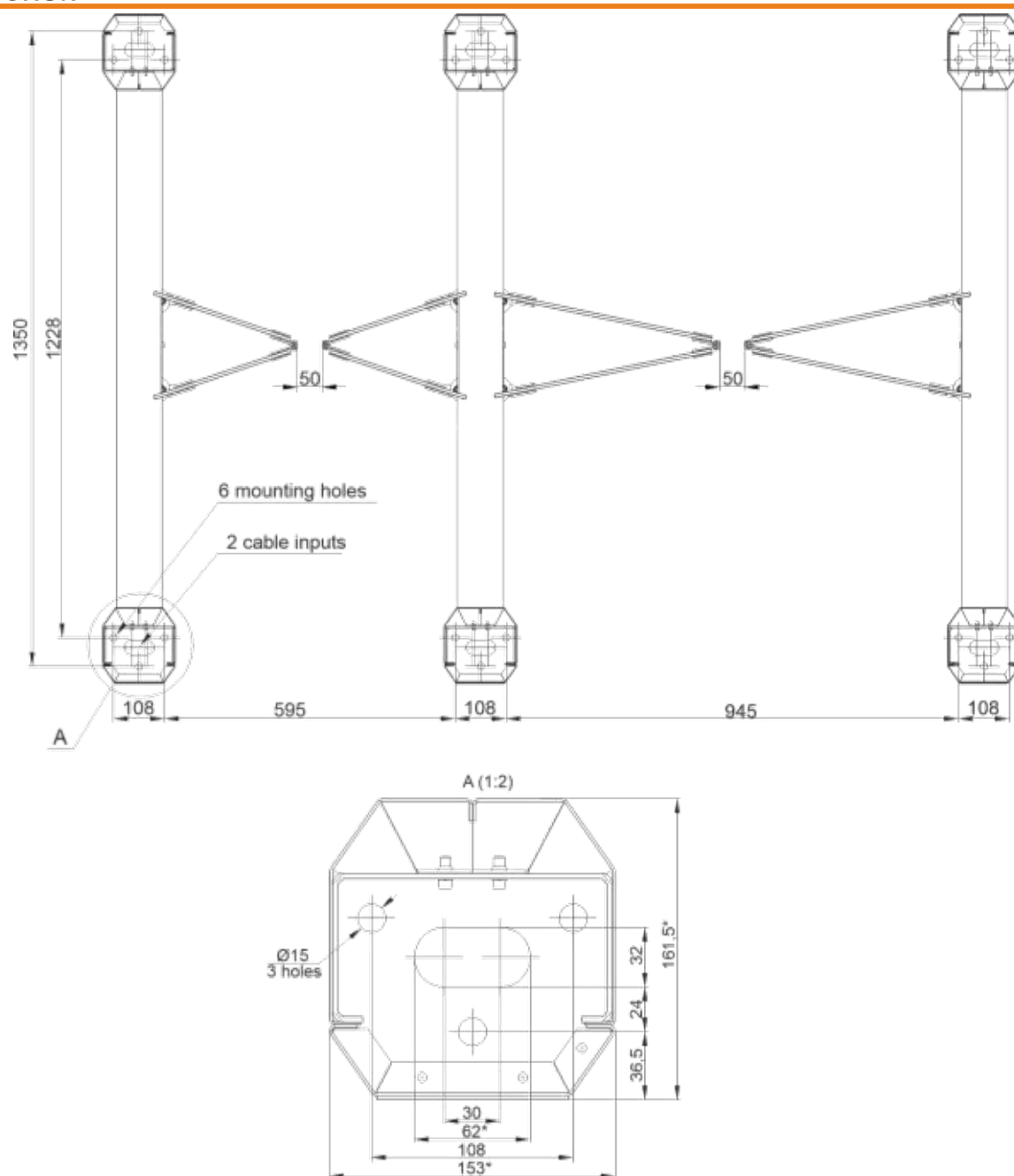


Fig. 14– Installation dimensions of SLIDE



IMPORTANT!

Cabinets are linked by control line optical sensor system requiring accurate positioning of cabinets. The relative position of cabinets and vertical position of the turnstile to be respected.

Cable entry must be carried out in corrugated or metal pipes.

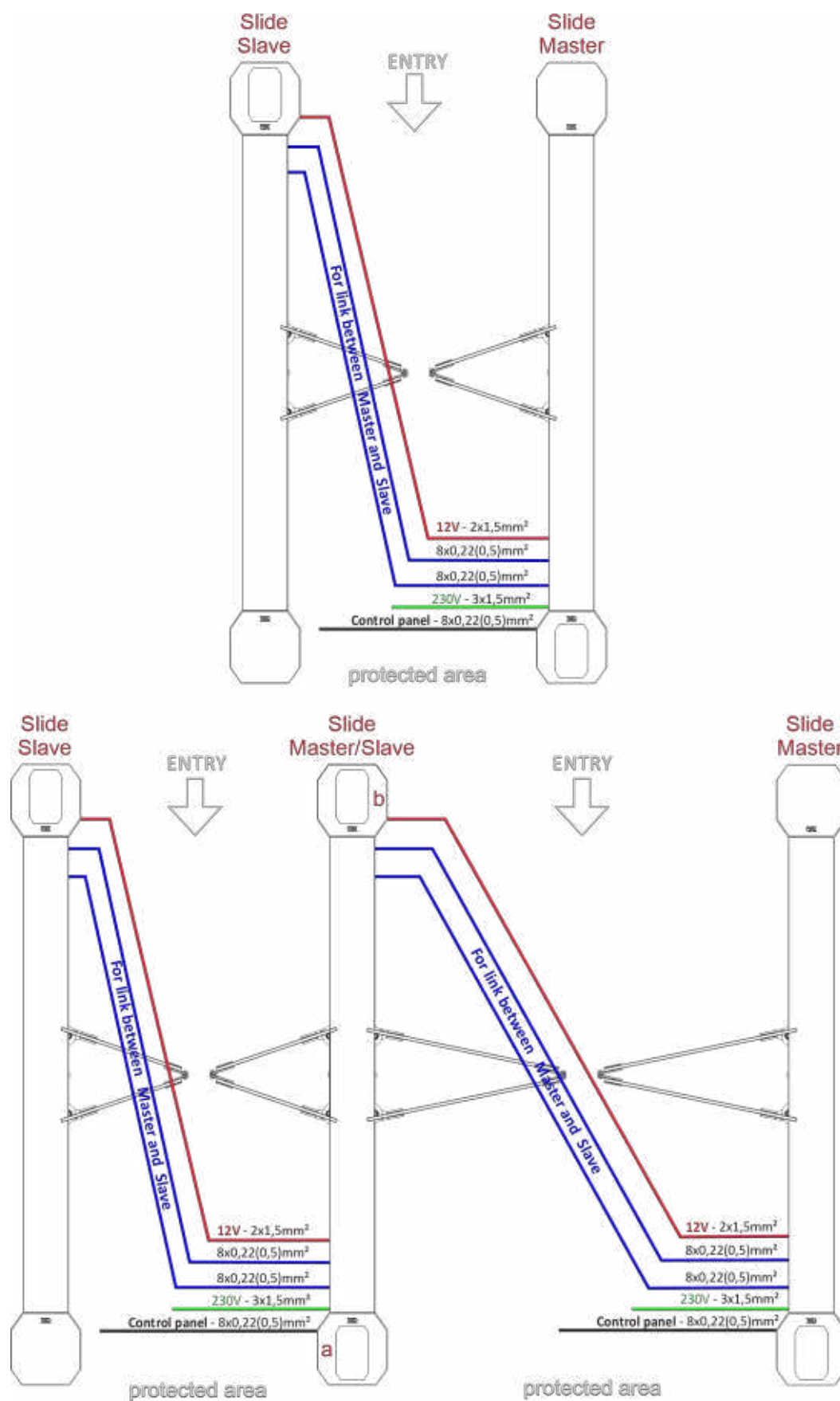
The lengths of the free ends of the cables must be at least 1 m to provide input, cut and connect them to the corresponding terminals in the turnstile frame.

The location of the cable outlet must coincide with the location of the hole on the turnstile mounting plate.

8) The following cables to be run to the turnstile installation site (Fig.15):

- Power supply cable 230 V ~;
- Control desk link cable;
- Access Control System (ACS) connection cables, if available;
- Cables between cabinets (Fig.16);

Cables to be run in corrugated or metal pipes.



* Access Control System (ACS) cables to be additionally run

Fig.15 – General view of connection between cabinets

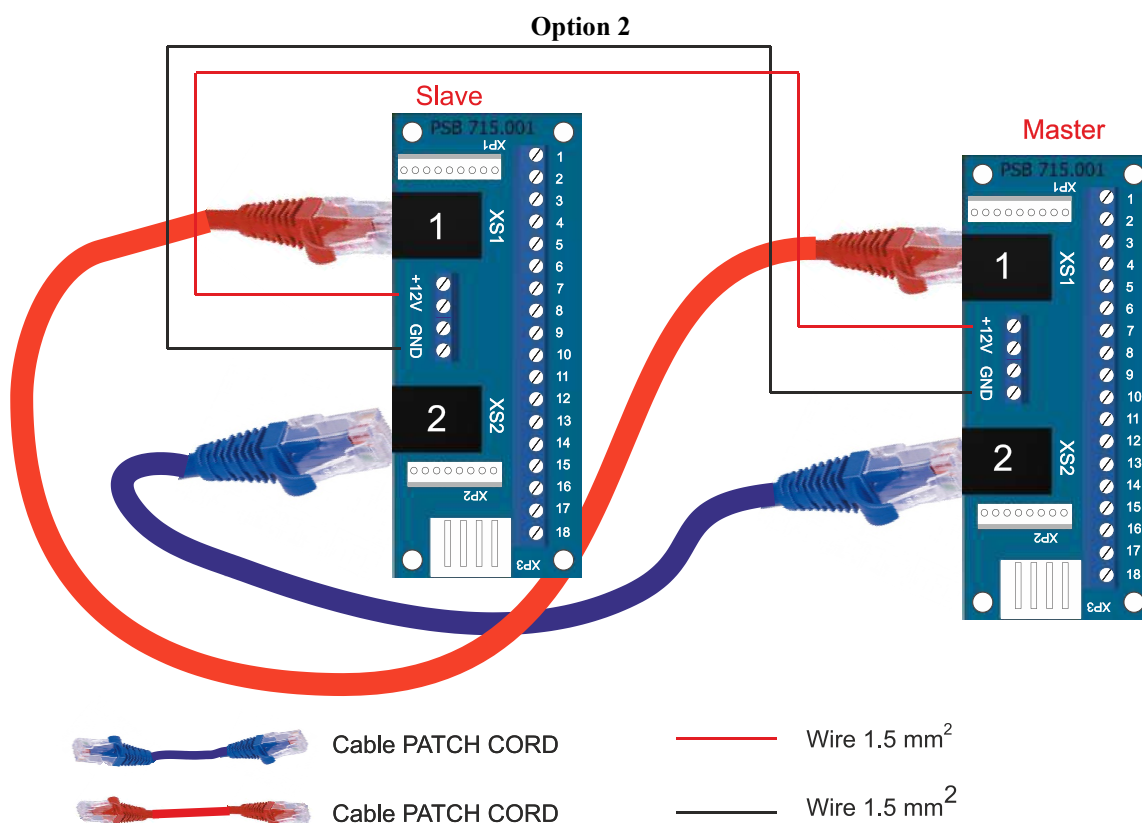
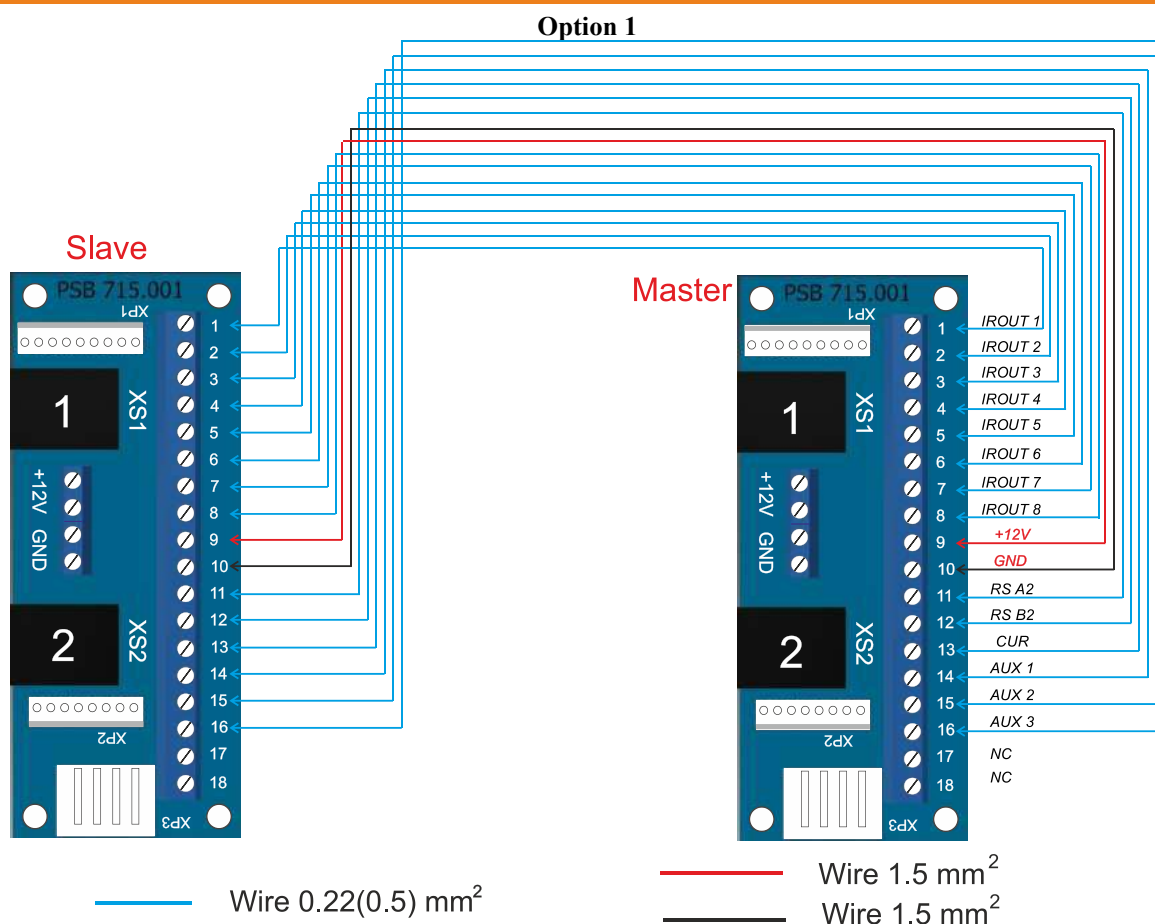


Fig.16 – Options of cable connection between cabinets Master and Slave

- 9) The length of cable free ends to be at least 1 m to provide their entry, termination and connection to the relevant terminals in the turnstile rack.
- 10) The cable outlet point to be aligned with the hole on the turnstile frame mounting plate.
- 11) To access the fixation holes and terminal blocks it is required:
 1. the glass top lid of stand to be removed (see Fig.17);
 2. remove the end panel by unscrewing the screws on the stand;
 3. cables to be pulled through available service hole in the turnstile rack bottom end part by reclining the turnstile;
 4. install a reader if needed (see fig.20);
 5. align fixation holes at the turnstile bottom plate with the prepared surface holes according to the marking shown in Fig.14; The turnstile to be fixed by means of anchors included in the scope of delivery



Fig.17 - General view of cabinet installation "Slide-1"

12) Turnstile connection:

a) Power supply cable ~220 V to be connected (Fig. 18):

- **Phase L** to be connected to the circuit breaker;
- **Neutral (N)** to be connected to terminal ~220V (N);
- **Earth (PE)** to be connected to earthing terminal (PE).

b) Control panel cable to be connected to terminals (Fig.

19):

- **P** (Power) – control panel power supply +12V;
- **G** (GND) – common wire of control panel;
- **A** (RSA) – RSA wire of control panel link;
- **B** (RSB) – RSB wire of control panel link;

c) The turnstile to be earthed, power supply cable to be connected the turnstile according to wiring diagrams (See Annex B).

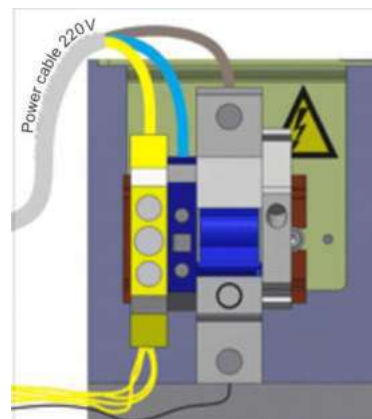


Fig.18– Connection of power supply cable

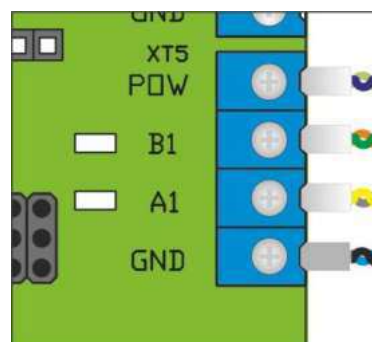


Fig.19– Connection the communication cable with control panel to terminals

13) Installation of proximity card reader * (supplied by order for a fee) , upon availability of access control system (ACS) (Fig.20).

1 - The turnstile glass top lid (a) of stand to be removed; Screws to be unscrewed and acrilight (b), to be removed; adjust the bracket (c) for the desired card reader (d);

2 – The card reader (d) to be installed on adjustable bracket (c) and to be connected to ACS,

3 - The maximum dimensions of the identification card reader (d) to be installed is 75x100x30 mm (See Fig. 20);.

Protective screen (b) to be fixed with screws in the previous position. , The turnstile end panel and top lid to be installed and fixed with screws in the previous position.

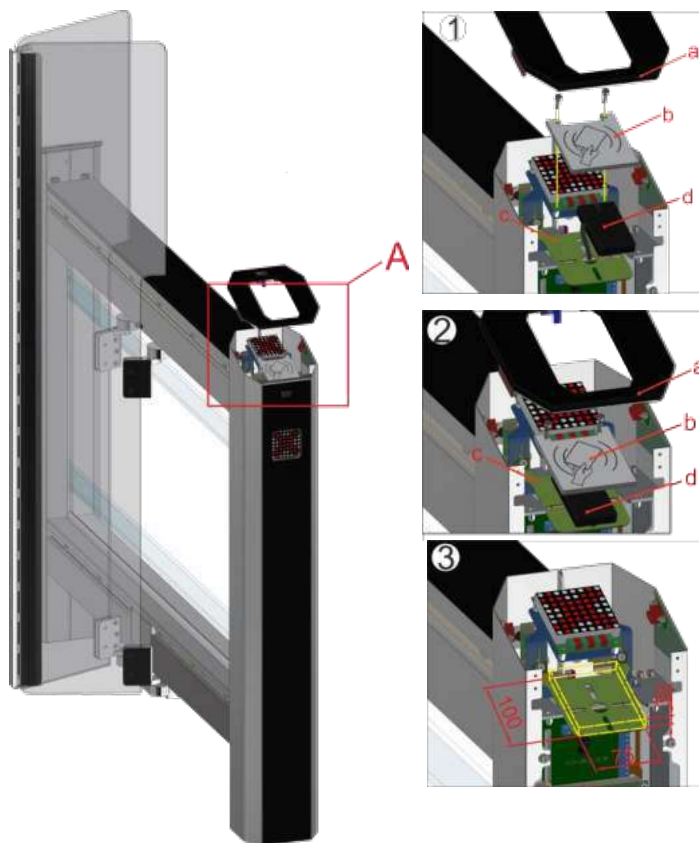


Fig.20 – Installation of card reader

2.4 Preparation for use

2.4.1 Commissioning guidelines

Prior to the turnstile energization:

- 1) make sure of proper connection and good condition of all connecting cables;
- 2) clear the turnstile's leaf folding area from foreign particles.

When mains cable of power supply unit is connected to the network the turnstile's operating mechanism is energized: leaves are locked from rotation in both directions blocking access.

The turnstile is put in initial state: ENTRY and EXIT LED display is blue (« » is lit).

2.4.2 Required inspections

2.4.2.1 When the turnstile is commissioned it is necessary to perform the inspections specified in Table 7. During inspections the wiring diagram according to Appendix C and the control panel according to Appendix B to be used.

Table 7

Operation Mode	Mode Setting	LED display	Functional check
1	2	3	4
1. Turnstile is closed in both directions (initial state)	–	Blue LED brightness is changed. Glass partition blue backlight is lit	Make sure that folding leaves are motionless
2. Single access in one direction	"SINGLE" button to be pushed for access in chosen direction («A» or «B»)	Green arrow of authorized single access in chosen direction is lit and blue LED brightness is changed in opposite direction. Glass partition backlight is lit green	Folding leaves move along the turnstile cabinet, i.e. intended direction is opened
3. Single access in both directions	Both "SINGLE" buttons to be pushed for access in both directions («A» and «B»)	Green arrows of authorized single access in both directions are lit. Glass partition backlight is lit green	Folding leaves move along the turnstile cabinet, i.e. both directions are opened
4. Free access in one direction	"FREE" button to be pushed for access in chosen direction («A» or «B»)	Green arrow of authorized free access in chosen direction is lit and blue LED display is lit in opposite direction	Folding leaves move along the turnstile cabinet, i.e. intended direction is opened
5. Free access in both directions	Both "FREE" buttons to be pushed for access in both directions («A» and «B»)	Green arrows of authorized free access in both directions are lit	Folding leaves move along the turnstile cabinet, i.e. both directions are opened
6 Single access in one direction and free access in opposite direction	"SINGLE" button to be pushed for access in chosen direction («A» or «B») and "FREE" button to be pushed for access in opposite direction	Green arrow of authorized single access in chosen direction is lit and green arrow of authorized free access in opposite direction is lit	Folding leaves move along the turnstile cabinet, i.e. both directions are opened
7 Single access in one direction and locked access in opposite direction	"SINGLE" button to be pushed for access in chosen direction («A» or «B») and "LOCK" button to be pushed to lock access in opposite direction	Green arrow of authorized single access in chosen direction is lit and red LED display of locked access direction is lit	Folding leaves move along the turnstile cabinet, i.e. intended direction is opened
8. Free access in one direction and locked access in opposite direction	"FREE" button to be pushed for access in chosen direction («A» or «B») and "LOCK" button to be pushed to lock access in opposite direction	Green arrow of authorized free access in chosen direction is lit and red LED display of locked access direction is lit	Folding leaves move along the turnstile cabinet, i.e. intended direction is opened
9. Locked access in one direction	"LOCK" button to be pushed to lock access in chosen direction ("A" or "B")*	Red LED of locked access in one chosen direction is lit	Make sure that folding leaves are locked

Continuation of table 7

1	2	3	4
10. Locked access in both directions	Both "LOCK" buttons to be pushed to lock access in both directions ("A" and "B")**	Red LED of locked access in both directions is lit	Make sure that folding leaves are motionless
11. Activation of "panic" mode	"PANIC" button to be pushed and hold within at least 7 sec.**	Green arrows of authorized free access in both directions are lit	Folding leaves move along the turnstile cabinet, i.e. different directions are opened
12 Deactivation of antipanic device	"PANIC" button to be pushed	Blue LED brightness is changed. Glass partition blue backlight is lit	Make sure that folding leaves can't be opened in either direction
* In this case other control desk buttons of single and free access in chosen direction are locked.			
** In this case all control desk buttons of single and free access in both directions are locked.			

2.4.2.2 After the turnstile is inspected it is ready for long-term operation

2.5 Contingency actions

For emergency human escape (in case of fire, acts of God etc.) and enabling free access the turnstile to be unlocked from control desk by issuing the relevant command. For full opening of access way the "PANIC" function to be used or "PANIC" button on control desk to be pushed and held for more than 7 seconds or a signal is sent to the relevant input (in3) of the turnstile controller. In case of mains power failure the turnstile automatically switches to power supply from backup battery (optional).

In case of mains power failure the turnstile automatically switches to power supply from backup battery (optional).

If the mains power is not recovered and battery is discharged, the glass leaves are unlocked (fail safe) and to be swung aside manually to create free access way.

3 MAINTENANCE

3.1 General guidelines

3.1.1 Commissioning and subsequent maintenance of the turnstile to be performed only by the staff to be in charge of the turnstile..

3.1.2 The turnstile to be serviced only by the staff having the relevant electrical safety qualification level according to the national requirements..

3.1.3 The turnstile to be installed and operated only by the qualified safety briefed staff having the relevant class of permit to work with electrical facilities with voltage up to 1000V, being aware of this OM, the turnstile design and principle of operation.

3.2 Safety Measures

3.2.1 During maintenance of the turnstile the relevant safety measures according to p. 2.1 to be observed.

3.2.2 When instrumentations are prepared for operation it is necessary to strictly comply with the safety requirements specified in instrumentation instruction manuals.



IT IS FORBIDDEN:

TO USE DEFECTIVE APPLIANCES, TOOLS, FUSES, INSTRUMENTATION THE SERVICE LIFE OF WHICH HAS EXPIRED

3.3 Maintenance procedure

3.3.1 The turnstile maintenance includes preventive measures which are taken according to the established frequency to maintain the turnstile in operational condition, decreasing of component wearing and prevention of faults and malfunctions.

3.3.2 Daily and periodic maintenance of the turnstile are recommended. Normally the daily maintenance is carried out before the beginning of operation or during operational timeout and includes visual inspection of the turnstile's housing and, if required, troubleshooting of mechanical damages, surface corrosion and contamination.

The recommended stainless steel detergents are given in Table 8.

Table 8

<i>Detergent description</i>	<i>Manufacturer</i>	<i>Country of origin</i>
Stainless steel cleaning spray "Stainless Steel Cleaner And Polish"	3M	Group of European companies
Cleaning fluid "Well Done"	Well Done	Hungary
Stainless steel products and other metals cleaner "XANTO STEEL 3in1"	XANTO	United Kingdom
«Dr.BECKMANN»	Dr.Beckmann	Germany
Cleaning solution "Reinex Edelstahlreiniger"	Reinex	Germany
Cleaning spray "Stainless steel cleaner"	Onish	United Kingdom



IT IS FORBIDDEN:

TO USE ABRASIVE AND CHEMICALLY ACTIVE SUBSTANCES DURING CLEANING OF CONTAMINATED EXTERNAL SURFACES OF THE TURNSTILE.

3.3.3 Periodic maintenance is performed at least twice a year and includes as follows:

- visual inspection of the turnstile's housing, control mechanism and other components
- for absence of corrosion, warps and other mechanical defects and pollutions;
- visual inspection of the turnstile's housing, control mechanism and other components for
- absence of external damages (corrosion, warps and other mechanical defects and pollutions;
- visual inspection of connecting, network and earthing cable condition;
- verification of the turnstile performance;
- during manual control in the modes specified in Table 7 or when identification cards are used;
- verification of reliability of the turnstile's screw joints and earthing connections.

4 ROUTINE MAINTENANCE

4.1 General guidelines

Minor malfunctions of the turnstile are listed in *Table 9* and are remedied by the customer. More complicated malfunctions are remedied by the manufacturer's representative.



**IMPORTANT:
INSPECTION, CLEANING, REPAIR OF THE TURNSTILE COMPONENTS TO BE
PERFORMED ONLY AFTER THE TURNSTILE DEENERGIZATION !**

4.2 Possible malfunctions

Possible malfunctions of the turnstile and their remedies are listed in Table 9.

Table 9 - Possible malfunctions

<i>Malfunction</i>	<i>Possible cause</i>	<i>Solution</i>
<i>1</i>	<i>2</i>	<i>3</i>
The turnstile does not work after power ON	<ul style="list-style-type: none"> • Lack of AC power. • The power cable is not connected. • Power supply unit is out of order. • Circuit breaker switched off inside the turnstile 	<ul style="list-style-type: none"> ✓ AC power to be recovered. ✓ Power supply cable to be connected. ✓ Power supply unit to be replaced. ✓ Switch on the power supply circuit breaker
Leaves do not open after giving a command from the ACS or a command from a wired 7-button control panel	<ul style="list-style-type: none"> • Turnstile does not obtain permission signal from ACS • No communication with the control panel • There are critical errors on motor controllers that have been identified by the self-diagnosis system. 	<ul style="list-style-type: none"> ✓ Check the presence of a trigger signal from the ACS ✓ Check the correct connection of the wired 7-button control panel ✓ Check and eliminate the causes of occurrence critical errors, that have been identified by the self-diagnosis system of the motor controller
Leaf knocks at the end of movement, when opening or closing.	<ul style="list-style-type: none"> • Leaf isn't calibrated correctly, zero point isn't adjusted. • There are critical errors on motor controllers that have been identified by the self-diagnosis system. • The mechanical stoppers of the mechanism are not adjusted 	<ul style="list-style-type: none"> ✓ Follow set zero leaf position setting procedure (see point 4.3) ✓ Check and eliminate the causes of occurrence critical errors, that have been identified by the self-diagnosis system of the motor controller ✓ Adjust the mechanical stoppers, after that follow set zero leaf position setting procedure (see point 4.3)
Control panel sound alarm and blinking with red indicator of bad "communication" signal	<ul style="list-style-type: none"> • Control panel don't have communication with main controller 	<ul style="list-style-type: none"> ✓ Check wires for damages and check wire connection of the control panel to the main controller (AUIA.206) ✓ Check the control panel for functionality
LED display is out of order	<ul style="list-style-type: none"> • No contact with controller • Wires are damaged • LED indicator is out of order 	<ul style="list-style-type: none"> ✓ Check wires for damages and check inter-cabinet connection wires. ✓ Check the indications wires for damages ✓ Check the LED indications boards ✓ LED indication board to be replaced.
Control panel sound alarm (error) and continuously lit red indication of turnstile	<ul style="list-style-type: none"> • Bad connection between the two cabinets of turnstile • Infrared sensors don't see each other. • Infrared sensors are out of order. 	<ul style="list-style-type: none"> ✓ Check wires for damages and check inter-cabinet connection wires. ✓ Protective plexiglass of the passage sensors to be cleaned from dust dirt ✓ Check infrared sensors for functionality. ✓ Infrared sensors to be replaced if they are out of order.
Leaf stays in semi-open position	<ul style="list-style-type: none"> • Mechanism jamming • There are critical errors on motor controllers that have been identified by the self-diagnosis system. 	<ul style="list-style-type: none"> ✓ Leaf opening manually to be checked with opened off power supply. ✓ Check the mechanism for jamming and backlash ✓ Check the zero position setting ✓ Check and eliminate the causes of occurrence critical errors, that have been identified by the self-diagnosis system of the motor controller

Continuation of table 9

1	2	3
Leaf remains open	<ul style="list-style-type: none"> • Mechanism jamming • "FREE ACCESS" mode is set. • Infrared sensors are out of order. • There are critical errors on motor controllers that have been identified by the self-diagnosis system. 	<ul style="list-style-type: none"> ✓ Leaf opening manually to be checked with opened off power supply. ✓ Mechanism components to be checked ✓ "Free access" mode to be opened off ✓ Sensor adjustment to be checked. ✓ Check and eliminate the causes of occurrence critical errors, that have been identified by the self-diagnosis system of the motor controller
Leaf slow opening	<ul style="list-style-type: none"> • Mechanism jamming. • Infrared sensors don't see each other. • Infrared sensors are out of order. • There are critical errors or was defined obstacles on motor controllers that have been identified by the self-diagnosis system. • Turnstile type or leaves size selected incorrectly on motor controllers 	<ul style="list-style-type: none"> ✓ Leaf opening manually to be checked with opened off power supply. ✓ Check the mechanism for jamming and backlash ✓ Check infrared sensors for functionality. ✓ Check and eliminate the causes of occurrence critical errors, that have been identified by the self-diagnosis system of the motor controller ✓ Obstacle detection sensitivity settings to be checked ✓ Check the correspondence of the type of the turnstile and the leaves size parameters at the motor controllers settings.

4.3. Adjustment of the zero position of leaf for "Slide"



- For **Slide** turnstiles, the zero position can be at point **CLOSE (0°)**. For turnstiles of this type, the zero position is determined and set automatically during working area searching.
- The leaf can be in random position.
- The working area search procedure can be launched: from the Master or Slave cabinet controllers and from any turnstile mode, at any menu page.
- For a more detailed description of the turnstile operation settings, please refer to the manual "AUIA.401.00.00-01. QuickStart"

The turnstile leaf initialization procedure can be started in two ways:

Option 1: (with PCB.730.004.01 fig.21)

- Press and hold the **ZERO (1)** button on the PCB.730.004.01 controller of the leaf magnetic sensor. The turnstile will go into «OFF» mode and a message (2) «gate sensor zero-button is pressed» will appear on the display of the AUIA.401.00.00-01 controller.
- After releasing the **ZERO (1)** button, the turnstile will start the working area search procedure.
- The controller will automatically determine the minimum and maximum of working area and reset the leaf magnetic sensor at the required point.
- Following a successful procedure, The controller will display a message for a few seconds «The workspace search was successful» and then switch to the home page:
- Turnstile is ready for work.

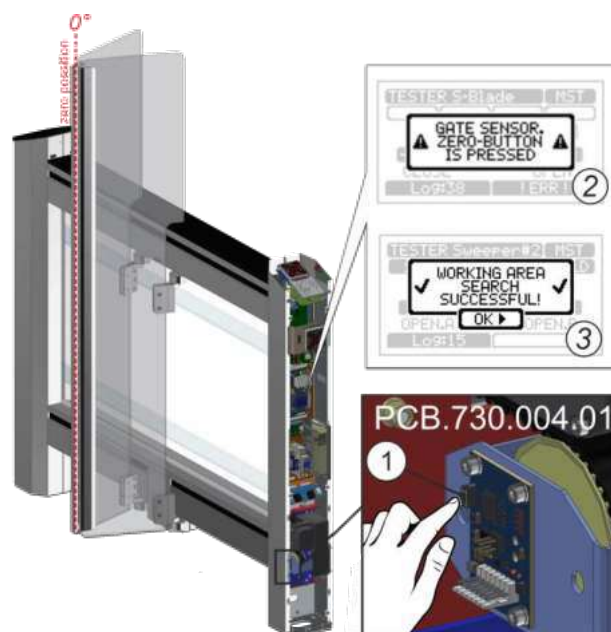


Fig.21 –Adjustment of the leaf zero position using the "zero" button

Option II (with AUIA.401.00.00-01 fig.22)

- Run the menu holding for 2 seconds the lower button (I) on the controller AUIA.401.00.00-01 and choose “Calibration”->”GateZeroSet” controller. If you request a calibration procedure, the turnstile will go to “OFF” mode.
- Confirm the start of working area search procedure by pressing “YES” (2) on the AUIA.401.00.00-01 controller display.
- The controller will automatically determine the minimum and maximum of working area and reset the leaf magnetic sensor at the required point.
- Following a successful procedure, The controller will display a message for a few seconds «The workspace search was successful» and then switch to the home page:
- Turnstile is ready for work.

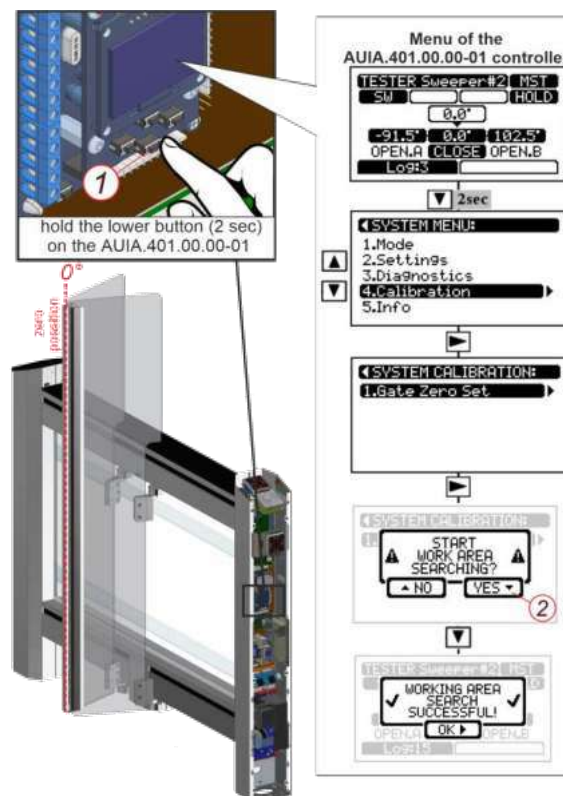


Fig.22 – Adjustment of the leaf zero position using the menu of controller AUIA.401.00.00-01

5 TRANSPORTATION AND STORAGE

5.1 Turnstile storage

It is forbidden to subject the turnstile to jerks and impacts during storage. Transportation trolleys to be used for handling of the turnstile. In storage facilities there should not be aggressive gases and vapours causing metal corrosion.

Air temperature during storage should not be below +5° C and above +40° C and relative air humidity should not be more than 80% at the temperature 20° C.

5.2 Turnstile transportation

The ready-to-install turnstile to be transported according to the transportation regulations related to the relevant mode of transport, such as:

- in railway or special containers;
- in closed vehicles;
- waterborne (in ship's hold) .

Transportation on open platforms is allowed. In this case the packed turnstile to be covered with canvas. Air temperature during transportation should not be below -40°C and above +50°C.

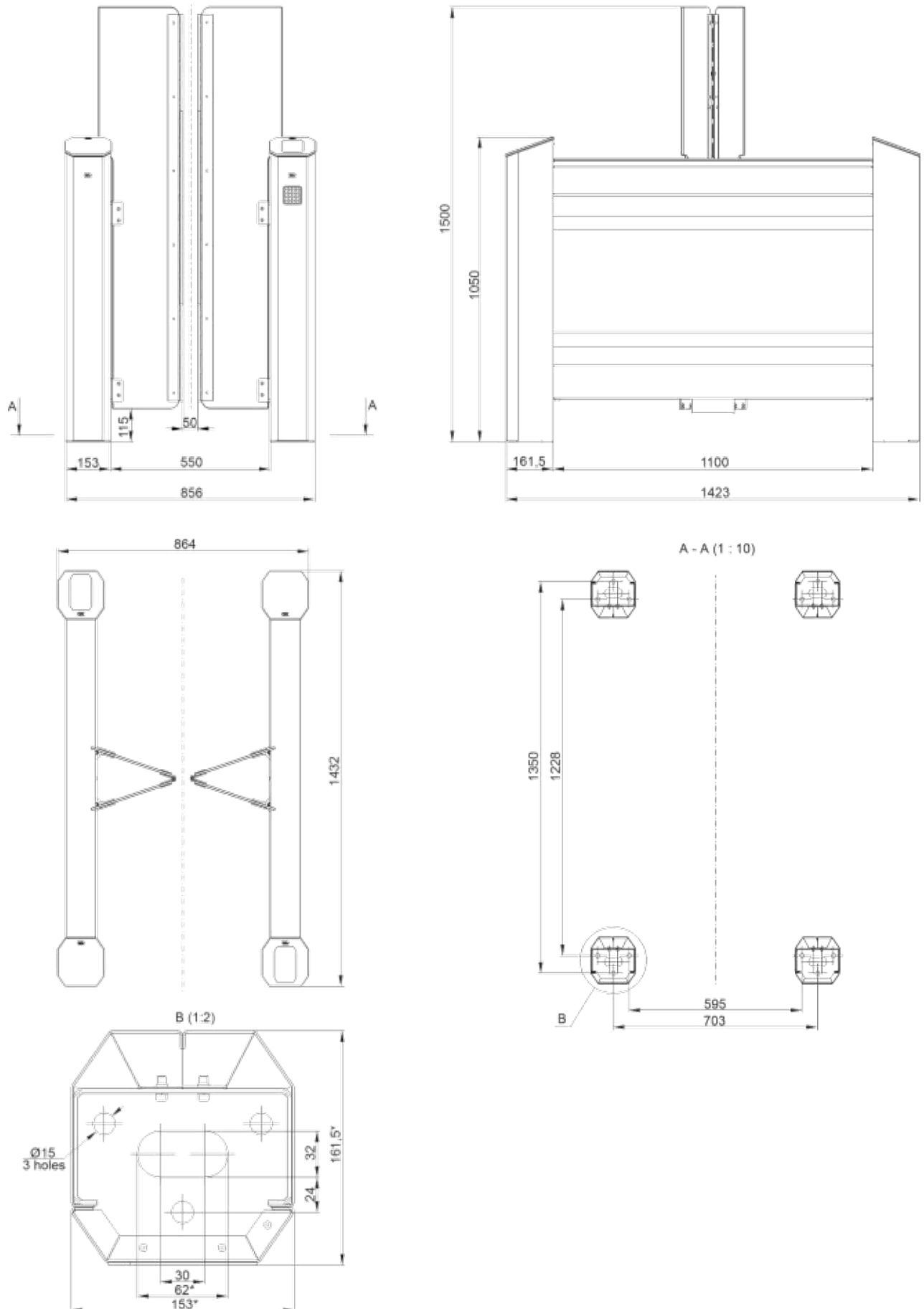
After transportation or storage of the turnstile at negative temperatures or increased humidity the turnstile to be kept indoor with normal climatic conditions without original packing within 12 hours before commissioning:

- 1) ambient temperature: + 15°C to +35°C;
- 2) relative humidity: 45% to 80 %;
- 3) atmospheric pressure: 84,0 to 106,7kPa (630-800 mm Hg).

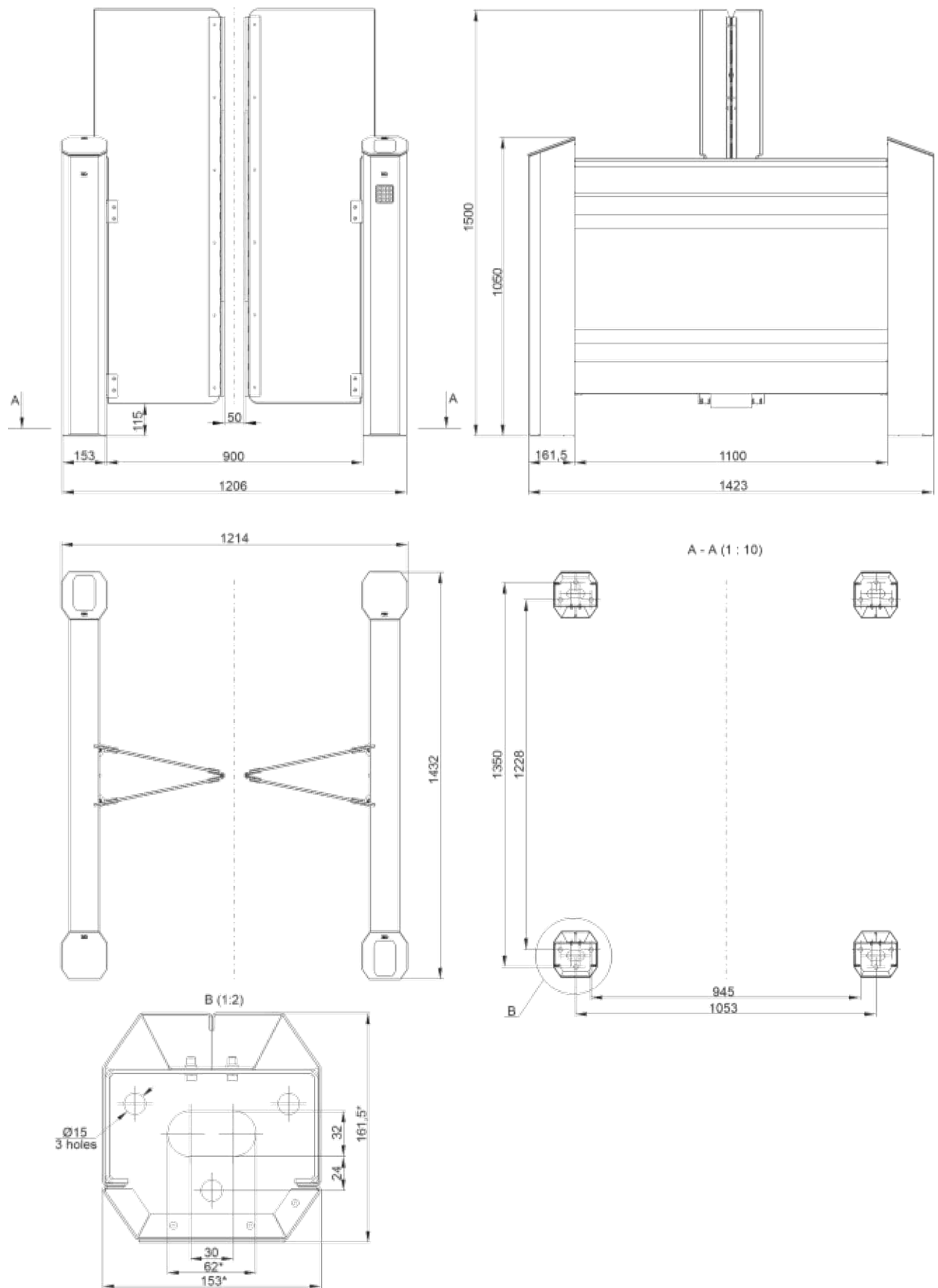
6 DISPOSAL

The turnstile design does not contain materials environmentally hostile and hazardous to health and special measures are not required for its disposal.

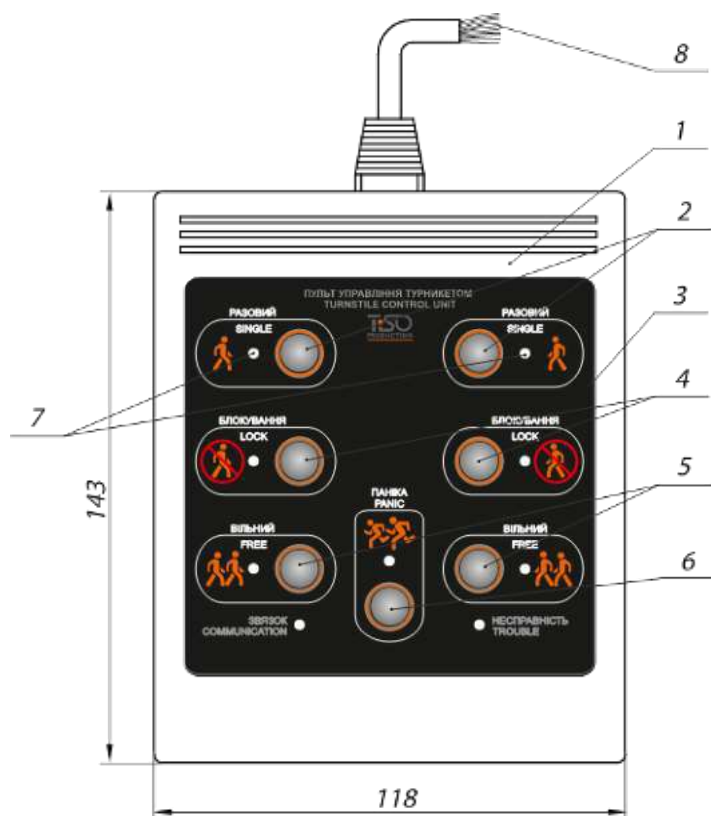
Annex A1. Design and dimensions of the "Slide-1" type turnstile with a passage of 550 mm



Annex A2. Design and dimensions of the "Slide-1" type turnstile with a passage of 900 mm



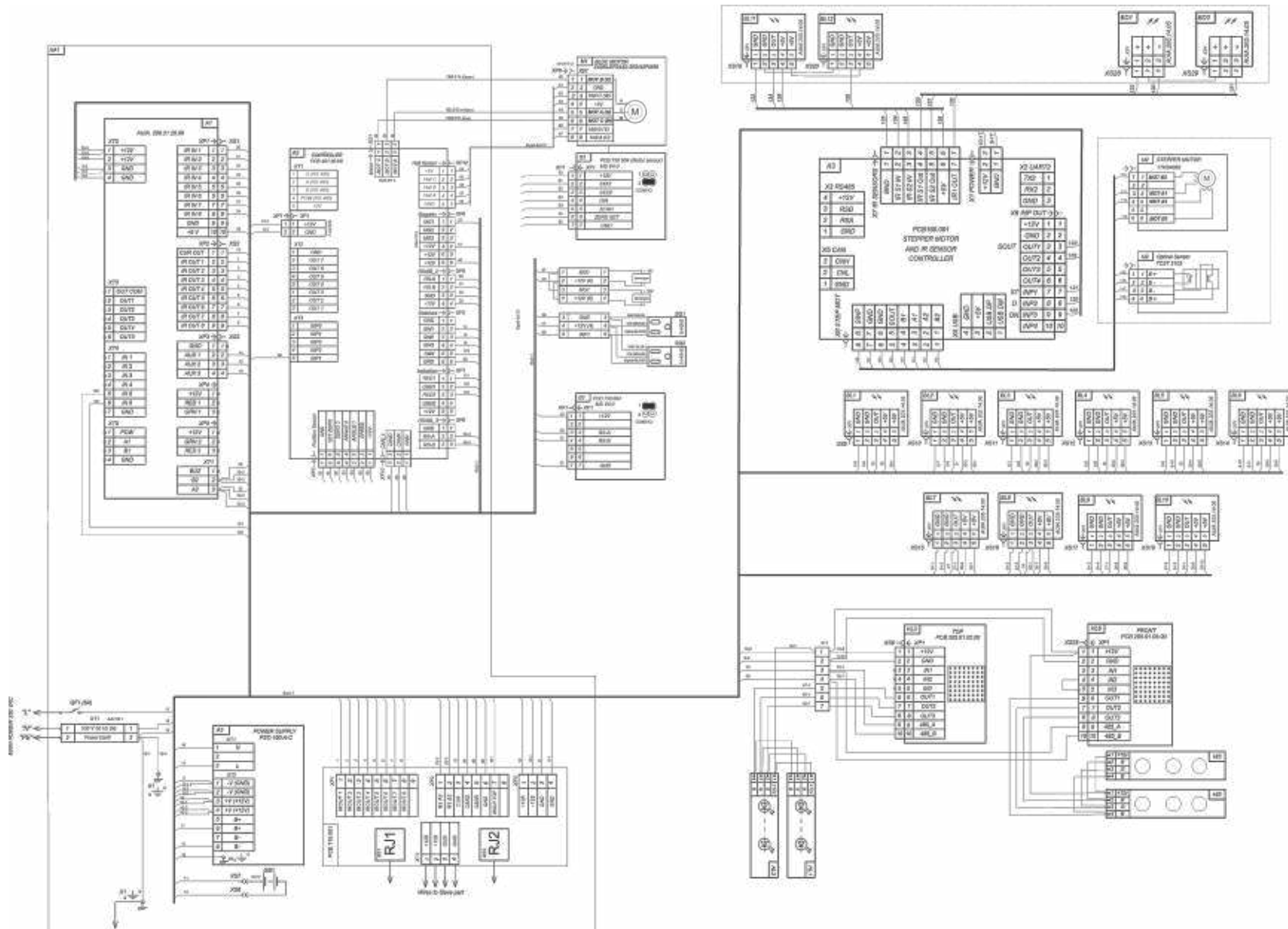
Annex B. Control panel and connection diagram AUIA.114.02.00.00



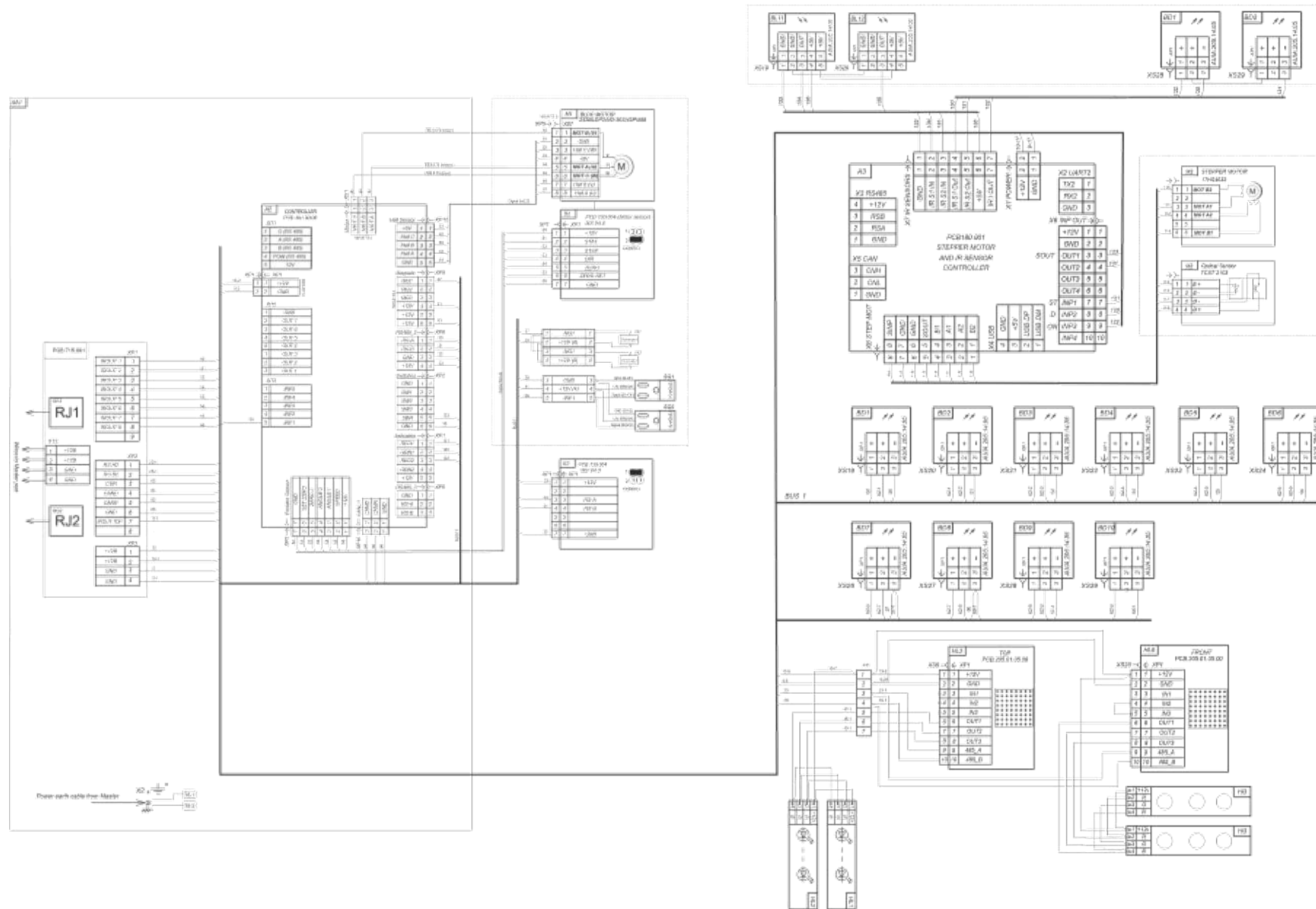
- 1 – control panel housing ;
- 2 – "SINGLE ACCESS" mode control button
- 3 – front plate;
- 4 – "LOCK" mode control button;
- 5 – "FREE ACCESS" mode control button;
- 6 – "PANIC" mode control button;
- 7 – access direction LED display;
- 8 – controller connection terminals

Control board AUIA.114.02.00.00		
Xt1		
	Cont.	Circuit
"P"	1	+12V
"G"	2	СИЙ
	3	SH
"A"	4	RS A
"B"	5	RS B

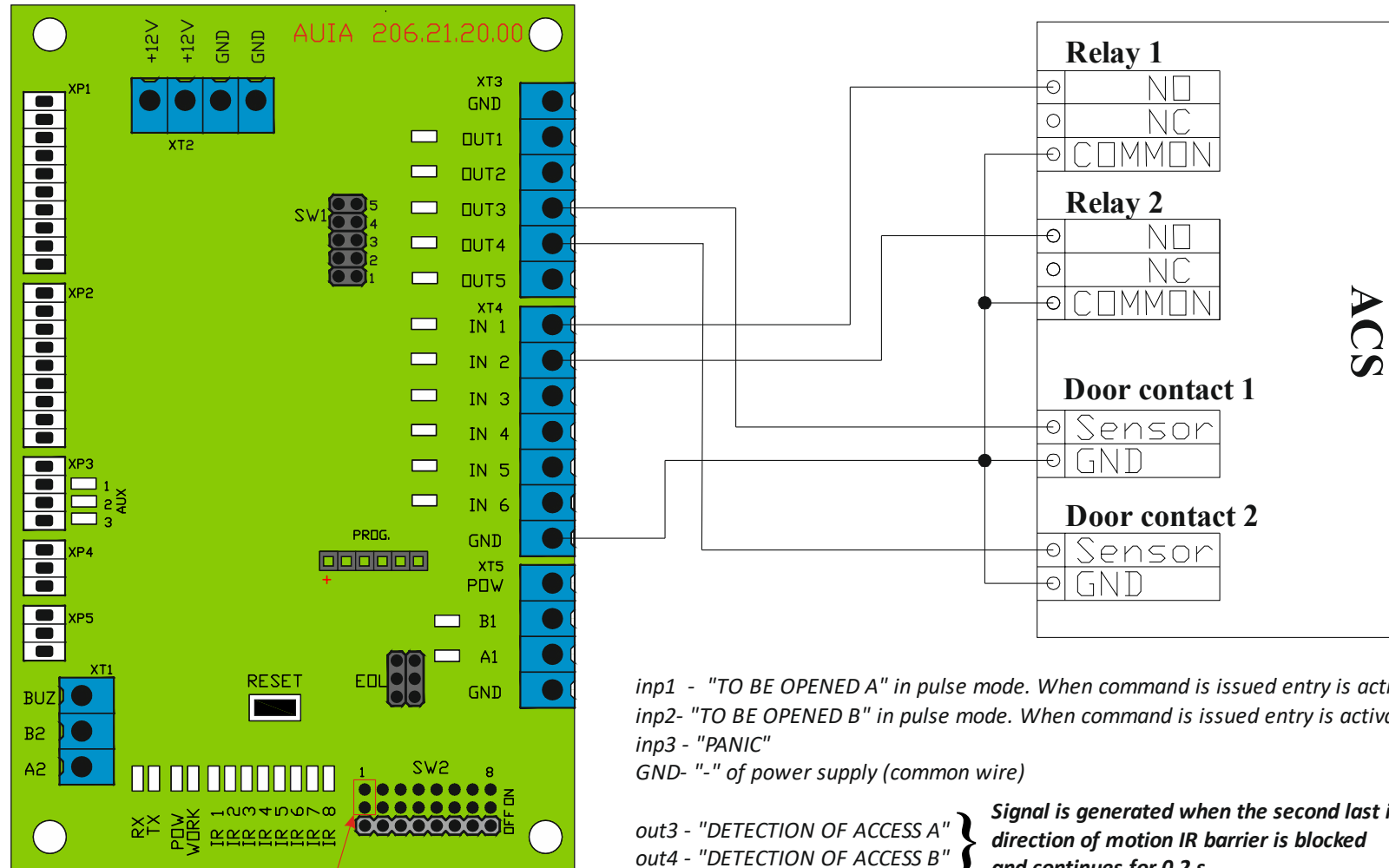
Annex C.1. Wiring diagram of the Slide 1.1 Master (AUIA.180) Rev 0.4 type turnstile



Annex C.2 Wiring diagram of the "Slide"1.2 type turnstile BM 1.2 Slave (AUIA.180) Rev 0.4

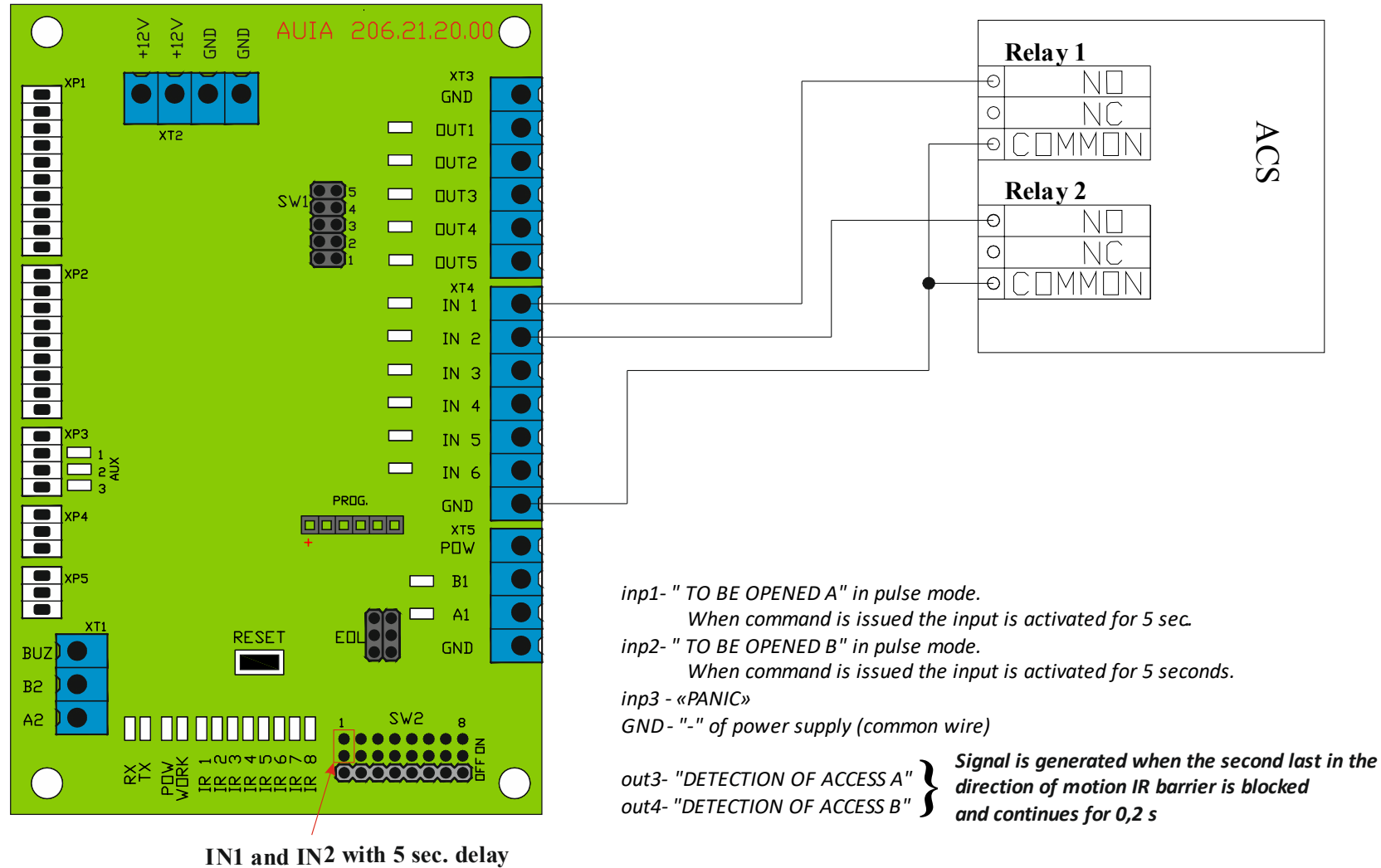


Annex D.1. Diagram of the turnstile connection to access control system (ACS)

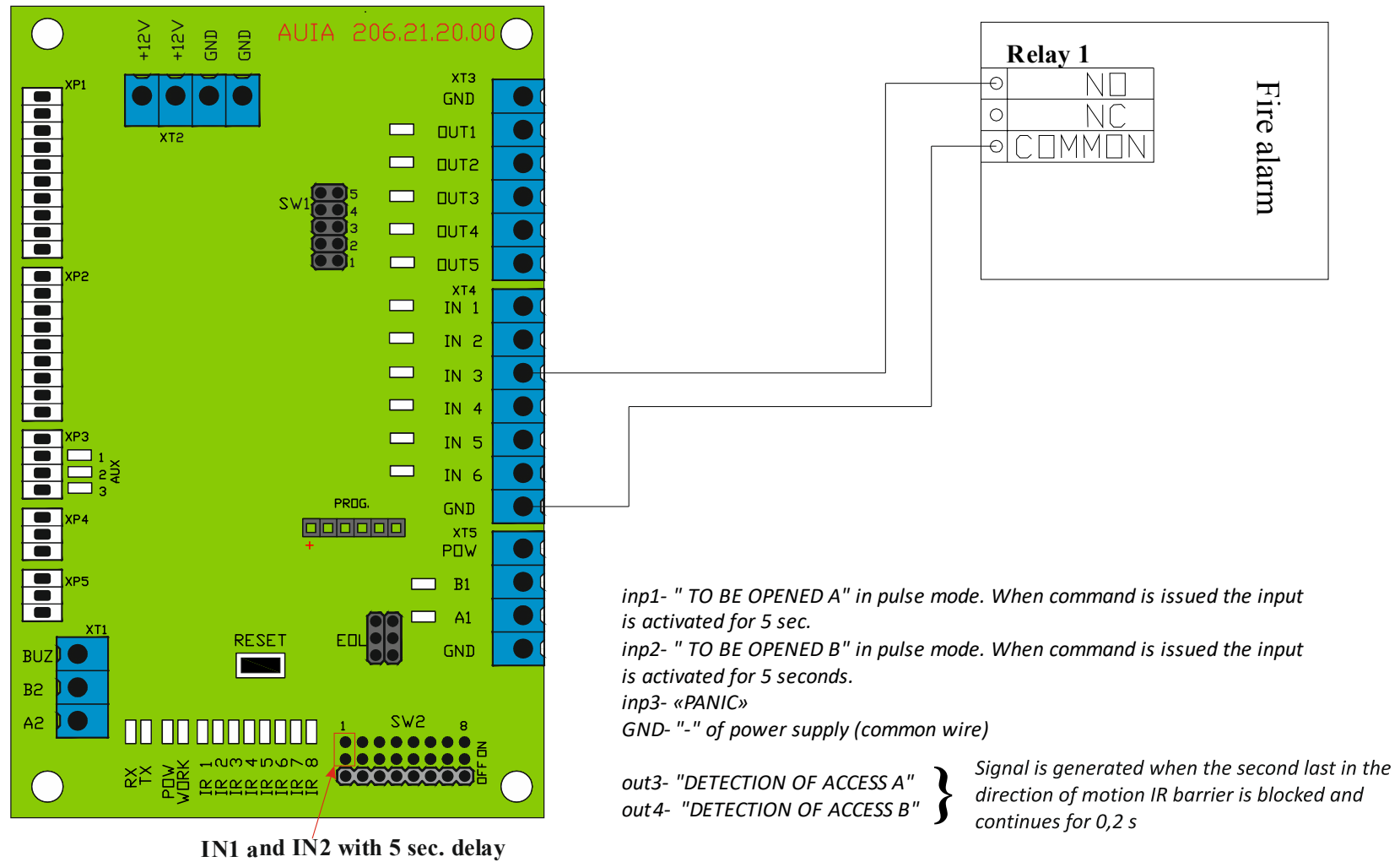


IN1 and IN2 with 5 sec. delay

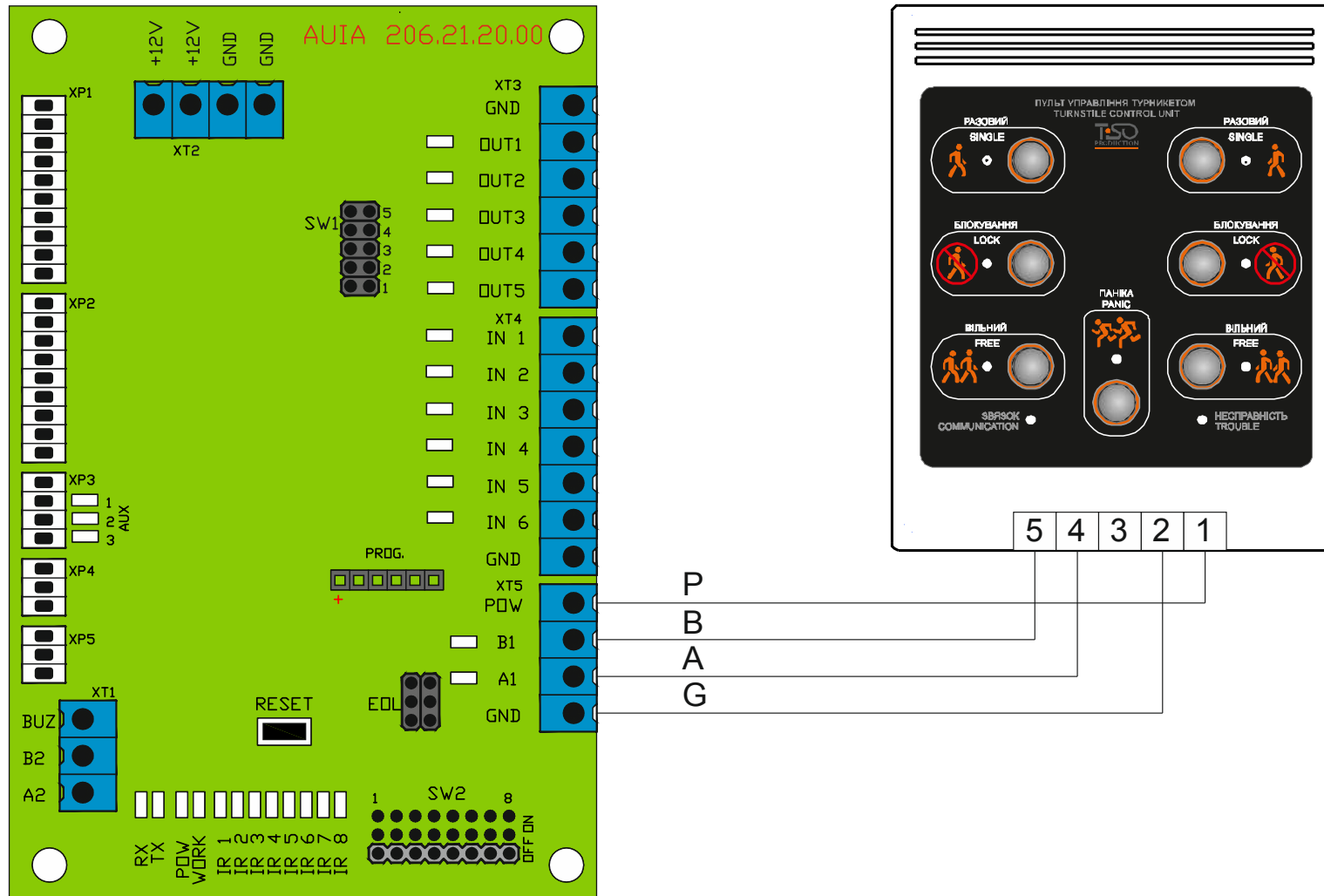
Annex D.2. Diagram of the turnstile connection to access control system (ACS)



Annex D.3. Diagram of the turnstile connection to fire alarm (FA)



Annex D.4. Diagram of the turnstile connection to control panel



Manufacturer:

LLC TiSO-PRODUCTION

14, Promyslova Street, Kyiv, 02088, Ukraine

Phone: +38 (044) 291-21-11

Tel./fax: +38 (044) 291-21-02

E-mail: sales@tiso.global

WEB www.tiso.global

SERVICE CENTER

e-mail: service1@tiso.global

Our equipment meets the requirements of European standards:

EN ISO 12100:2010, EN ISO 14118:2018, EN 60204-1:2018,

EN ISO 13857:2019, EN 61000-6-1:2007, EN 61000-6-3:2007/A1:2011/AC:2012

and meets the requirements of the following EU Directives:

2014/30/EU; 2014/35/EU, 2006/42/ EC

The manufacturer's quality management system is certified according to the international standard ISO 9001:2015 - Certificate № UA 18 / 819942484.

QR-code to be used to download the Operation Manual via Internet

